

Hospitality Lighting

Hospitality Lighting presents several different challenges for the lighting system. The diverse needs typically found within hotels require versatility within the lighting system.

Our Solid-State offering can meet many of the needs of a hospitality application with a surprisingly small number of products. The design commonality throughout the entire hotel creates efficiencies in maintenance and consistency in appearance.

The Calculite Solid-State Downlight is a specification grade product with exceptional CRI and is available in multiple lumen packages, color temperatures, and finishes. Additional features like standard dimming and a 50,000 hour rated life (L70) present unique advantages to different spaces. A full building design can incorporate downlights from this single Solid-State product line while still maintaining the flexibility hospitality applications demand.

Lighting System Demands	
Guest Rooms	High CRI, layered lighting, integration of supplemental lighting of different sources
Circulation Areas	24 hour use, emergency/egress capability, directional lighting, efficiency
Lobby Bar	Control capabilities, visual appeal, layered lighting



Creating a welcoming and intimate atmosphere in the hotel bar or restaurant is an important way to differentiate it from the rest of the hotel. The lighting design must present guests with an inviting alternative to their rooms. This often requires the application of dimmable fixtures and lighting controls to create preset lighting scenes. Adding

decorative elements to the design is critical to making the space welcoming and attractive. A combination of Solid-State downlights, track and decorative pendants can meet all these requirements and poses a highly efficient and practical solution to the hotel bar or restaurant.

Adding decorative elements to the design is critical to making the space welcoming and attractive.

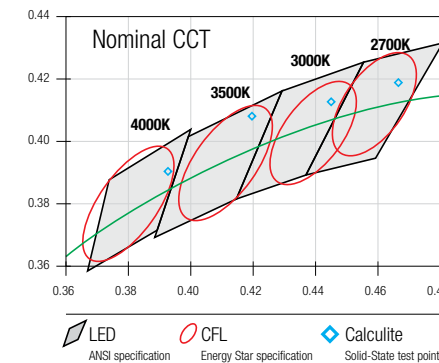
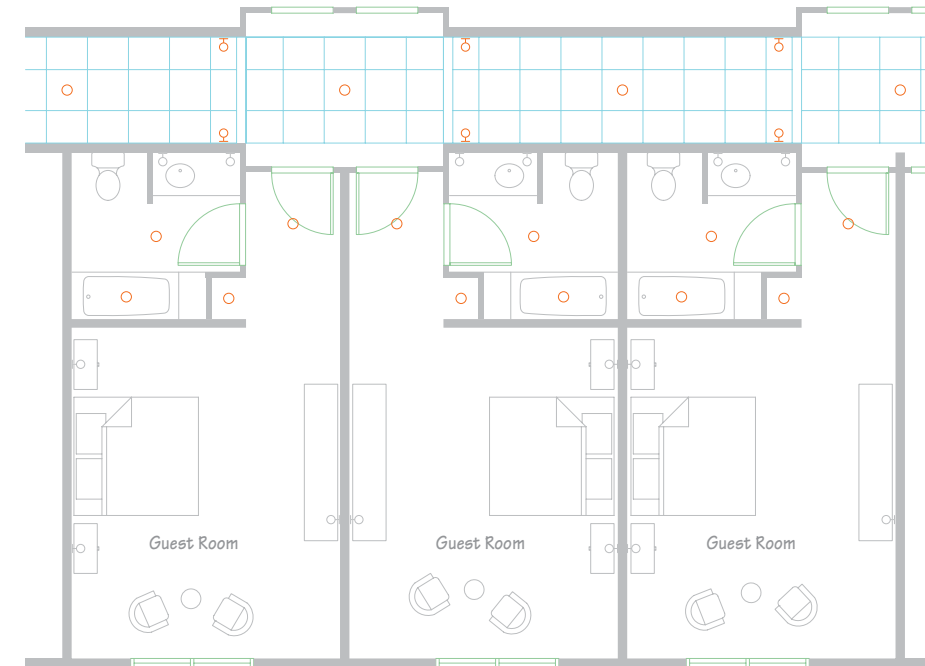
Example: Guest Rooms

While the hotel lobby and bar usually receive a majority of the design emphasis; the circulation spaces and guest rooms account for a majority of the installed fixtures. Selecting high performance luminaires for these spaces is the key to reducing maintenance costs and realizing energy savings.

In the following example, Calculite Solid-State downlighting was utilized in the hallways where 24 hour use is required. A 20W light engine was specified that reduced wattage

while still providing the light levels needed for safe passage. A low wattage decorative sconce was used to supplement the downlight and to provide a way finding element in the hallways.

In the guest rooms, a 10W Calculite Solid-State Downlight was chosen for general illumination in the bathrooms and room entrances. The flexibility provided by multiple CCT options was crucial, since it will be supplemented by CFL task lighting next to the bed and around the mirrors.



The ability to integrate Solid-State luminaires with the supplemental lighting required for hospitality applications is critical to a consistent feel in the space. This chart demonstrates the CCT of our LED engines in relation to CFL.

Calculite Round Aperture

- 20W and 10W options
- 500, 1000, 1500 and 2000 lumen packages
- Multiple CCT options
- 50° Cutoff

Product Details - Page 14



Vetro Wall Sconce

- Hand blow triplex glass
- Soft decorative glow
- ADA Compliant
- 6W LED Engine

Product Details - Page 39

