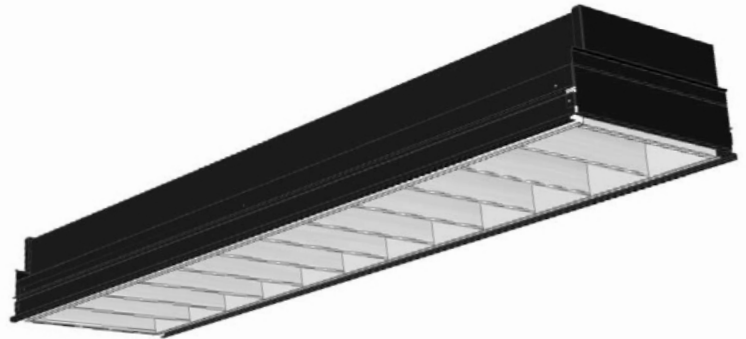


# VRA Recessed Fluorescent VRA1G12LW232

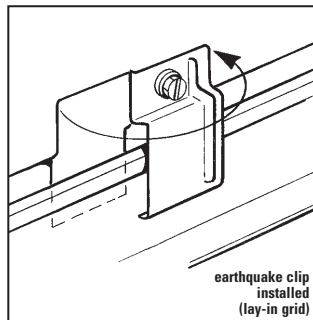
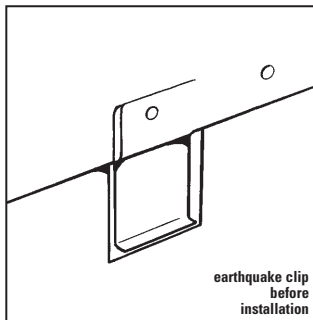
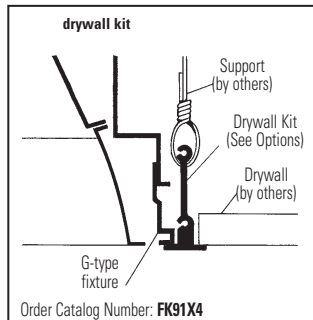
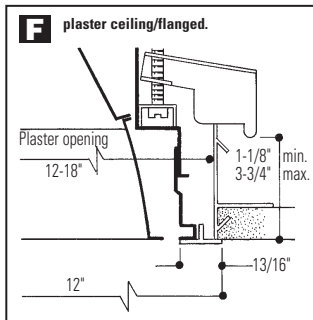
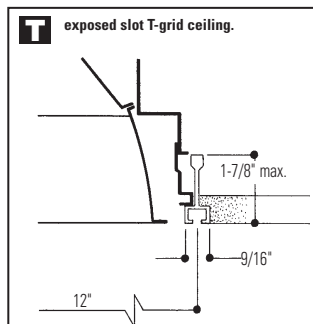
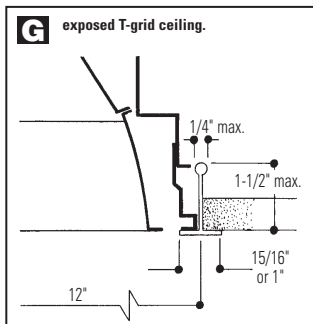
Page 1 of 2

12" x 48", 12 Cell (1 Row) Parabolic Louver, Static or Air Supply/Return  
2 Lamp T8 or T5, IES RP1 For VDT Areas

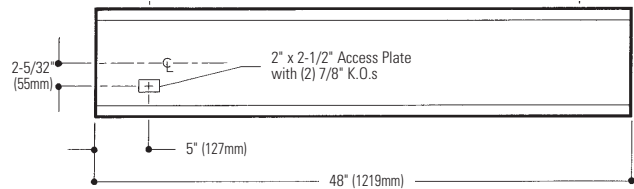
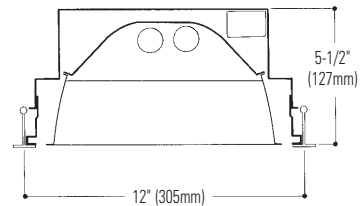
- Meets IES RP1 for lighting VDT areas with normal use.
- 61.3% efficient (2 Lamp T8) semi-specular.
- 64.1% efficient (2 Lamp T8) specular louver.
- 1.6 spacing mounting ratio.
- Vertical grain on louver eliminates reflected lamp images on the cross baffle.
- Louver frame with positive light stop.
- Spring-loaded latches, (self-centering).
- Reversible louver hinging.
- Louver has protective dust guard.
- Only 5-1/2" deep.
- Black housing for cooler ballast operating temperature.
- Turned-in edges for safe handling.
- Built-in earthquake clips (patent no. 5,072,344).
- Air closure strips (optional).
- Construction to meet NYC Code or Chicago Plenum requirements is available.



## Mounting Methods



## Dimensions



## Job Information

Type:

Job Name:

Cat. No.:

Lamp(s):

Volts/Ballast:

Lightolier a Genlyte company

www.lightolier.com

Technical Information: (978) 657-7600 • Fax (978) 658-0595

631 Airport Road, Fall River, MA 02720 • (508) 679-8131 • Fax (508) 674-4710

We reserve the right to change details of design, materials and finish.

© 2005 a Genlyte company

Section 2/Folio G05-32



# VRA Recessed Fluorescent VRA1G12LW232

### Model No. VRA1G12LW232120S0

LER = FP - 48.8 IW - 62.0 BF - 0.87  
Comparative yearly lighting energy cost per  
1000 lumens = \$4.92

Report Number: G2005187  
Catalog Number: VRA1G12LW232120S0  
Lamps: F32T8/TL841/ALTO  
Luminaire: VRA 1' x 4' with white reflector  
and 12 cell low iridescence semi-specular  
louver.  
Ballast: SYL QT2X32T8/1201SN-SC  
Report is based on 2850 Lumens per lamp.  
Efficiency: 61.3%  
CIE Type-Direct-Indirect  
Plane: 0-Deg 90-Deg  
Spacing Criteria: 1.2 1.6  
Shielding Angles: 90 90  
Plane: 0-Deg 90-Deg  
Luminous Length: 48.000 9.000

#### CANDELA DISTRIBUTION

	0.0	45.0	90.0	FLUX
0	1620	1620	1620	
5	1606	1619	1636	155
15	1512	1599	1684	453
25	1356	1554	1756	721
35	1144	1465	1755	908
45	823	1143	1322	843
55	112	442	484	346
65	27	34	88	57
75	9	9	9	10
85	3	3	2	3
90	0	0	0	

#### COEFFICIENTS OF UTILIZATION - ZONAL CAVITY METHOD. EFFECTIVE FLOOR CAVITY REFLECTANCE 0.20

RC	80	50	30	10	50	30	10
RW 70	69	67	65	63	61	60	59
1	69	67	65	63	61	60	59
2	64	60	57	55	52	55	53
3	59	54	50	49	46	50	48
4	55	49	45	47	43	41	46
5	51	45	40	43	39	36	42
6	48	41	36	39	35	32	38
7	44	37	32	36	32	29	35
8	41	34	29	33	29	26	32
9	39	31	27	30	26	24	30
10	36	29	25	28	24	22	28

#### LUMINANCE DATA IN CANDELA/SQ. METER

AVERAGE IN DEG.	AVERAGE 0-DEG.	AVERAGE 45-DEG.	AVERAGE 90-DEG.
45	4118.	5719.	6614.
55	691.	2726.	2985.
65	226.	285.	737.
75	123.	123.	123.
85	122.	122.	81.

#### ZONAL LUMEN SUMMARY

ZONE	LUMENS	% LAMP	% FIXT
0- 30	1329	23.3	38.0
0- 40	2237	39.2	64.0
0- 60	3426	60.1	98.0
0- 90	3496	61.3	100.0
90-180	0	0.0	0.0
0-180	3496	61.3	100.0

### Model No. VRA1G12PW232120S0

LER = FP - 51.2 IW - 62.0 BF - 0.87  
Comparative yearly lighting energy cost per  
1000 lumens = \$4.71

Report Number: G2005188  
Catalog Number: VRA1G12PW232120S0  
Lamps: F32T8/TL841/ALTO  
Luminaire: VRA 1' x 4' with white reflector  
and 12 cell specular louver.  
Ballast: SYL QT2X32T8/120ESN-SC  
Report is based on 2850 Lumens per lamp.  
Efficiency: 64.1%  
CIE Type-Direct-Indirect  
Plane: 0-Deg 90-Deg  
Spacing Criteria: 1.2 1.6  
Shielding Angles: 90 90  
Plane: 0-Deg 90-Deg  
Luminous Length: 46.200 9.480

#### CANDELA DISTRIBUTION

	0.0	45.0	90.0	FLUX
0	1639	1639	1639	
5	1628	1640	1655	157
15	1541	1631	1709	462
25	1390	1605	1822	744
35	1190	1562	1842	961
45	922	1266	1412	927
55	45	470	490	357
65	9	12	68	39
75	4	4	4	5
85	3	2	2	3
90	0	0	0	

#### COEFFICIENTS OF UTILIZATION - ZONAL CAVITY METHOD. EFFECTIVE FLOOR CAVITY REFLECTANCE 0.20

RC	80	50	30	10	50	30	10
RW 70	72	70	68	66	64	63	62
1	72	70	68	66	64	63	62
2	67	63	60	60	57	55	58
3	62	57	53	54	51	48	52
4	58	51	47	49	46	43	48
5	54	47	42	45	41	38	44
6	50	43	38	41	37	34	40
7	46	39	34	37	33	30	37
8	43	36	31	34	30	27	34
9	40	33	28	32	28	25	31
10	38	30	26	29	25	22	29

#### LUMINANCE DATA IN CANDELA/SQ. METER

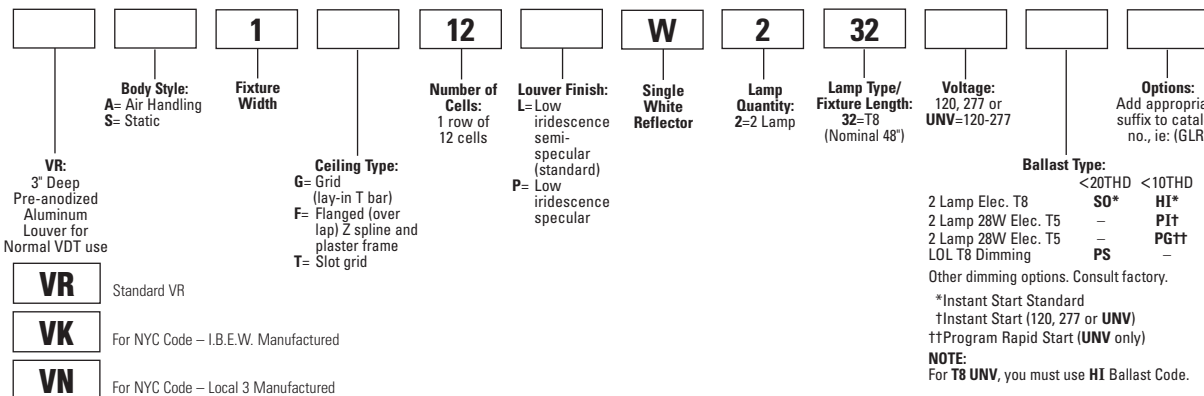
AVERAGE IN DEG.	AVERAGE 0-DEG.	AVERAGE 45-DEG.	AVERAGE 90-DEG.
45	4613.	6334.	7064.
55	278.	2899.	3022.
65	75.	100.	569.
75	55.	55.	55.
85	122.	81.	81.

#### ZONAL LUMEN SUMMARY

ZONE	LUMENS	% LAMP	% FIXT
0- 30	1362	23.9	37.3
0- 40	2323	40.8	63.6
0- 60	3607	63.3	98.7
0- 90	3653	64.1	100.0
90-180	0	0.0	0.0
0-180	3653	64.1	100.0

## Ordering Information

Explanation of Catalog Number. Example: VRA1G12LW232120S0



## Options/Accessories

**Access Plate:** Top wiring access plate is shipped with fixture as standard. When access plates are required in advance for wiring convenience, specify separately. Order Catalog Number: **ACP CSP**.

**Fusing:** Internal fast-blow fusing. SUFFIX **GLR**.  
Internal slow-blow fusing. SUFFIX **GMF**.

**Radio Interference Filter:** To order one RIF per fixture: SUFFIX: **R**. To order one RIF per ballast: SUFFIX: **B**

**Air Closure Strip:** SUFFIX: **ACS4** (factory installed).

**Chicago Plenum:** SUFFIX: **C**.

**Drywall Kit:** Order Catalog Number: **FK91X4**.

## Specifications

**Air Handling:** (VRA only) side air passages for air supply or return.

**Optional Side Closure Strips:** Air return is also provided through the lamp compartment through fixture body ends.

**Materials:** Chassis parts are die-formed code gauge cold rolled steel with side rails hemmed over and housing ends turned-in for safe handling. Louver is pre-anodized aluminum (Coilzak® or equal).

## Specifications (continued)

**Finish:** Chassis exterior—black baked polyester enamel. Cavity—white baked polyester enamel minimum 86% reflectance. Phosphate undercoating. Louver—low iridescence semi-specular anodized vertical grain aluminum reflector sheet is standard.

**Electrical:** Thermally protected class "P" ballast C.B.M. approved, non PCB. If K.O. is with in 3" of ballast, use wire suitable for at least 90°.

**Labels:** I.B.E.W. UL and ULc Listed.

## Job Information Type:

Lightolier a Genlyte company www.lightolier.com  
Technical Information: (978) 657-7600 • Fax (978) 658-0595  
631 Airport Road, Fall River, MA 02720 • (508) 679-8131 • Fax (508) 674-4710  
We reserve the right to change details of design, materials and finish.  
© 2005 a Genlyte company Section 2/Folio G05-32

# LIGHTOLIER®