

Ordering Information

Family	Lamps	Length	Type	Mounting	Shielding	Voltage	Options
SQ6	2		I		N		
	2 = 2-Light	4 = 4-Foot 8 = 8-Foot	I = Indirect	P = Suspended W = Wall	N = None	1 = 120v 2 = 277v 3 = 347v D1 = Dimming 120v D2 = Dimming 277v E1 = Emergency 120v E2 = Emergency 277v	X4 = 4th Wire X5 = 5th Wire Blank = No Opt. DS = Dual Switch

Complete ordering instruction below.

Features

- Housing:** 20 gauge pre-painted die formed steel. Weldless, die-cast bulkheads allowing casting to casting luminaire connection. ABS Cast plastic end caps, painted white to match housing, fastenerless attachment.
- Lamp:** Two F32T8 fluorescent lamps per 4-foot section. Provided by others.
- Reflector:** Precision die-formed high reflectance white pre-painted steel.

Electrical

Electronic Ballast: 3 conductor, 18 gauge wire. Color-coded quick connectors allow easy connection for modular fixtures. Power feed is 18 gauge white cord. Factory installed ballast disconnect allows the ballast to be disconnected from and reconnected to incoming power under load without turning the entire circuit off.

Dimming: Advance Mark X, use Advance compatible two-wire control (no extra lead required).

Emergency Battery Pack: 450 Lumens @ 90min.

Mounting

Cable Mounting: (not shown) 4-1/2" (11.43cm) diameter canopy finished white enamel, 1/16" (0.16cm) diameter stainless steel aircraft cable adjustable up to 36" (91.44cm) Draw-tight connector to create hairline seam between joiner modules.

Stem Mounting: (not shown) 4-1/2" (11.43cm) diameter canopy finished white enamel, 1/2" (1.27cm) diameter stem. Standard length is 24" (61.30cm) from the ceiling to the top of the lighting fixture. can be cut to length on the job. Self-aligning swivel provides adjustability up to 42° of slopes.

Wall Mounting: Precision die-formed steel bracket system that hooks and locks onto the wall, painted white.

Finish

Pre-painted textured white finish. Shipped with plastic adhesive film protector.

Options and Accessories

Dual Switching: Order the DS option for separate row switching. DS option comes complete with the 4th through wire option.

4 and 5 wire: Order X4 for EM battery. For non-standard dimming options, order X5 option for Advance Mark VII, DALI and ESI. Order X4 for Lutron Hi-Lume and ECO-10. Consult factory for any additional wiring conditions.

Ordering Instructions

Individual Fixtures:

- Order number of Modules required.
- Order one Power Feed End Set (Cable or Stem) per Module.

Continuous Runs:

- Determine run length.
- Order the appropriate number of Modules for the complete run.
- Order one Power Feed End Set (Cable or Stem) per run.
- Order one Cable or Stem Assembly per Modules minus one per run.
- For runs that exceed amperage limits, order the appropriate number of Cable/Cord Assemblies (not required for stem).

Labels

UL, cUL and I.B.E.W.

Job Information

Type:

Job Name:

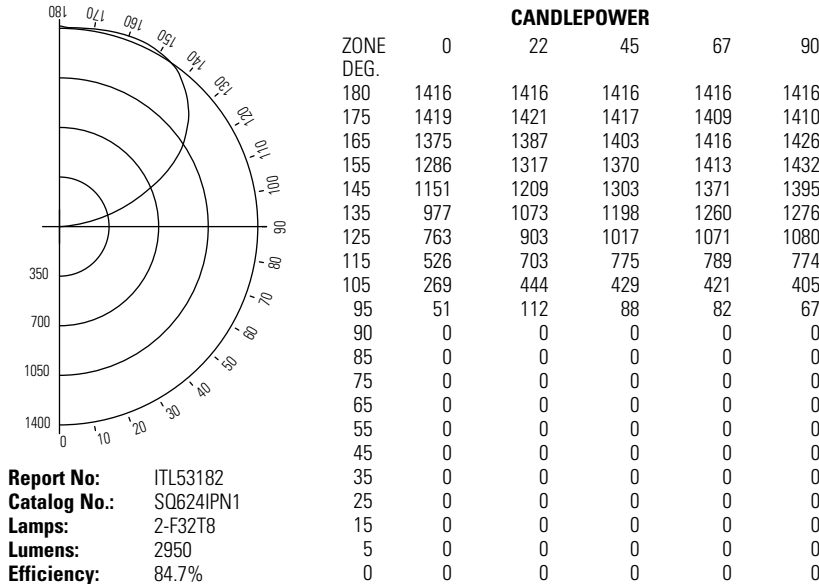
Cat. No.:

Lamp(s):

Notes:

631 Airport Road, Fall River, MA 02720 • (508) 679-8131 • Fax (508) 674-4710
We reserve the right to change details of design, materials and finish.
www.lightolier.com © 2008 Philips Group • E1208

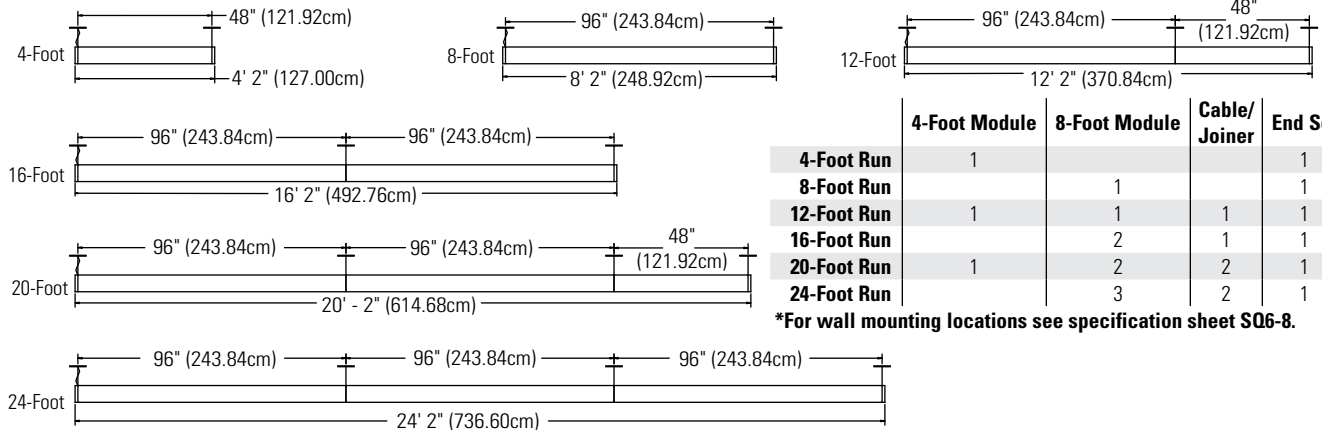
Performance & Quick Calculators



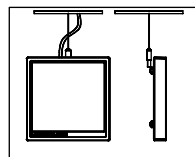
ROOM CAVITY RATIO	COEFFICIENTS OF UTILIZATION								
	% EFFECTIVE CEILING CAVITY REFLECTANCE								
	80			70			50		
	% WALL REFLECTANCE								
	50			30			10		
0	81	81	81	69	69	69	47	47	47
1	70	67	64	60	57	55	41	40	38
2	61	56	52	52	49	45	36	34	32
3	54	48	43	46	41	38	32	29	26
4	47	41	36	40	35	32	28	25	22
5	42	35	31	36	31	27	25	21	19
6	37	31	26	32	27	23	22	19	16
7	33	27	23	29	23	20	20	16	14
8	30	24	20	26	21	17	18	14	12
9	27	21	17	23	18	15	16	13	11
10	24	19	15	21	16	13	15	11	9

ZONAL LUMEN SUMMARY			
ZONE	LUMENS	% BARELAMP	% LUMINAIRE
0-90	0	0.0	0.0
90-180	4998	84.7	100.0
0-180	4998	84.7	100.0

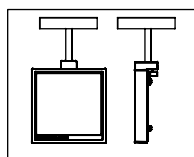
Fixture Lengths & Mounting Locations



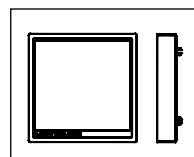
Mounting Accessories



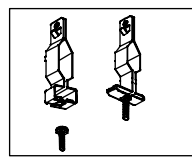
Power Feed End Set:
 3 Wire Cord: SQ6EC36
 4 Wire Cord*: SQ6EC36X4
 5 Wire Cord*: SQ6EC36X5



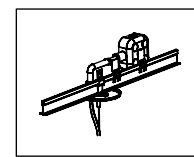
End Set Stem:
 SQ6ES24



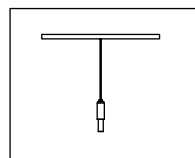
End Set Wall:
 SQ6E



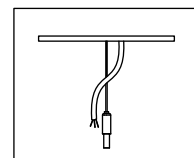
Ceiling Grid Kit:
 CGK
 Includes both standard 1" Tee and Slot Tee Clip.
 Order one for every non-powered suspension point.



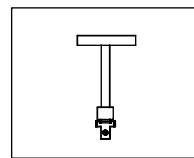
Ceiling Grid Kit Power:
 CGKP
 Includes the hardware necessary to install a power feed above a suspended ceiling. J-box and Flex not included. Order one for every powered suspension point.



Intermediate Cable Suspension:
 SQ6C36



Cable Cord Assembly:
 3 Wire Cord: SQ6CC36
 4 Wire Cord*: SQ6CC36X4
 5 Wire Cord*: SQ6CC36X5



Intermediate Suspension Stem:
 SQ6S24

*Use for dimming or emergency battery packs.

Job Information	Type:
-----------------	-------

631 Airport Road, Fall River, MA 02720 • (508) 679-8131 • Fax (508) 674-4710
 We reserve the right to change details of design, materials and finish.
 www.lightolier.com © 2008 Philips Group • E1208