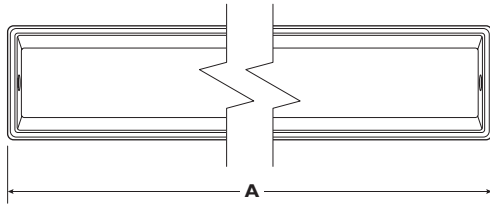
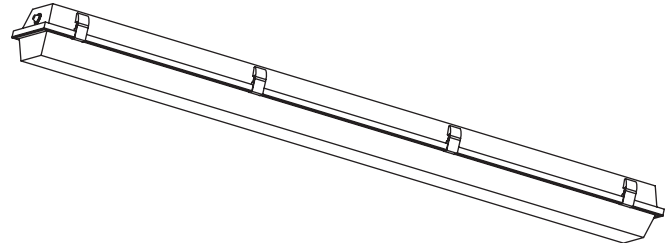
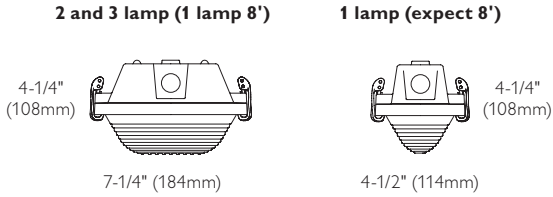


# Sealatron IP Low Profile

## Enclosed Industrial Wet Location Luminaire, T5/T8



| A (overall length) |                   |
|--------------------|-------------------|
| 2' models          | 27-11/16" (703mm) |
| 4' models          | 51-9/16" (1310mm) |
| 8' models          | 100" (2540mm)     |

### Ordering Information

| Sealatron IP                    | Fixture Length                | Fixture Width                 | Lens Shielding   | Lamp Quantity   | Lamp Type / Fixture Length   | Voltage                                    | Ballast Type  | Options  |
|---------------------------------|-------------------------------|-------------------------------|--|---|--|--|---|--|
| <input type="text" value="IP"/> | <input type="text" value=""/> | <input type="text" value=""/> | <input type="text" value=""/>  | <input type="text" value=""/>   | <input type="text" value=""/>  | <input type="text" value=""/>              | <input type="text" value=""/>   | <input type="text" value=""/>  |
| Enclosed Industrial Fluorescent | 2 = 2'<br>4 = 4'<br>8 = 8'    | N† = 4-1/2"<br>W = 7-1/4"     | R = Linear Ribbed Polycarbonate<br>A = Linear Ribbed High Impact Acrylic | 1 = 1 Lamp<br>2 = 2 Lamps<br>3 = 3 Lamps (28, 32 & 54 watt lamp types only)‡<br>(by others) | 14 = T5 (2')<br>17 = T8 (2')<br>24 = T5HO (2')<br>28 = T5 (4')<br>32 = T8 (4')<br>54 = T5HO (4')<br>(Nominal size) | 120 = 120v<br>277 = 277v<br>UNV = 120-277v | 1 & 2 Lamp Elec. T8<br>1-3 Lamp Elec. T8<br>1-4 Lamp Elec. T8<br>1 & 2 Lamp Elec. T5<br>1-3 54w Lamp Elec. T5HO<br>1-4 54w Lamp Elec. T5HO<br>*Instant Start Standard<br>**Program Rapid Start (UNV only) | - <input type="text" value=""/><br>Add appropriate suffix to catalog no., ie: (A)<br><br><10THD<br>HI*<br>H3*<br>H4*<br>PG**<br>PU**<br>PV** |

† Narrow housing only available in one lamp, two and four foot fixture sizes.  
‡ 28W, 32W and 54W available in three lamp, four foot fixture sizes.  
§ 28W and 32W available in three lamp, eight foot fixture sizes.

### Features

- IP65 and IP67 rated.
- Acceptable for outdoor as well as indoor installations.
- Wet Location-Areas of high humidity, water vapor, rain, incidental water spray, or other non-corrosive or nonflammable liquid.
- Also suitable for damp locations.
- Non-conductive, non-corrosive housing.
- Smooth exterior surface for easy cleaning.
- Molded fiberglass 5V-A housing.
- Ribbed prismatic diffuser.
- Continuous poured gasket.
- Polycarbonate cam action latches are standard.
- Ballast is retained by a snap-on gear tray in lieu of channel, reducing weight.
- Two snap-on stainless steel mounting brackets included, can be installed anywhere along housing (except at latches)

| Job Information | Type: |
|-----------------|-------|
| Job Name:       |       |
| Cat. No.:       |       |
| Notes:          |       |

# Sealatron IP Low Profile

## Enclosed Industrial Wet Location Luminaire, T5/T8

### Specifications

**Materials: Chassis parts**– Molded fiberglass 5V-A housing. Continuous poured gasket. Polycarbonate cam action latches are standard. Ballast is retained by a snap-on gear tray in lieu of channel, reducing weight.

**Finish: Chassis exterior**– Non-conductive, non-corrosive housing. Smooth exterior surface for easy cleaning.

**Lens:** IP65 and IP67 rated linear ribbed lens.

**Electrical:** Class P, HPF certified ballasts comply with Federal Ballast Law (Public Law 100-357, 1988). Self-contained fluorescent emergency ballasts available: Wet location only, use BDL600 or BDL500 for T8 applications. Consult factory for T5 applications.

**Labels:** UL/cUL listed. Wet Location UL 1570/cUL C22.2 No. 9.

This product may have a mercury containing lamp.  
Manage in accord with Disposal. Laws. See: [www.lamprecycle.org](http://www.lamprecycle.org)

### Options & Accessories

**Electrical Wiring Options:** Consult factory.

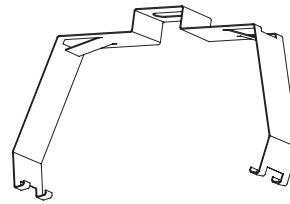
**Emergency Pack Options:** Consult factory.

**Fusing:** Internal fast blow fusing: Suffix: **A**.  
Internal slow blow fusing: Suffix: **C**.

**Stainless steel latches available** (consult factory).

### Mounting Options

Surface mounted only. Mounting bracket included.



### Additional ordering information:

| Size | Family | Lamps X section | Lamp fixture | Available lenses | Lamp type    | Length in. (mm) | Width in. (mm) | Height in. (mm) |
|------|--------|-----------------|--------------|------------------|--------------|-----------------|----------------|-----------------|
| 2'   | IP     | 1               | 1            | R                | 14, 17, 24HO | 27 11/16" (703) | 4 1/2" (114)   | 4 1/4" (108)    |
|      |        | 2               | 2            | R                | 14, 17, 24HO | 27 11/16" (703) | 7 1/4" (184)   | 4 1/4" (108)    |
| 4'   | IP     | 1               | 1            | R                | 28, 32, 54HO | 51 9/16" (1310) | 4 1/2" (114)   | 4 1/4" (108)    |
|      |        | 2               | 2            | A, R             | 28, 32, 54HO | 51 9/16" (1310) | 7 1/4" (184)   | 4 1/4" (108)    |
|      |        | 3               | 3            | A, R             | 28, 32, 54HO | 51 9/16" (1310) | 7 1/4" (184)   | 4 1/4" (108)    |
| 8'   | IP     | 1               | 2            | A                | 28, 32, 54HO | 100" (2540)     | 7 1/4" (184)   | 4 1/4" (108)    |
|      |        | 2               | 4            | A                | 28, 32, 54HO | 100" (2540)     | 7 1/4" (184)   | 4 1/4" (108)    |
|      |        | 3               | 6            | A                | 28, 32       | 100" (2540)     | 7 1/4" (184)   | 4 1/4" (108)    |

### Lens information

|          |                                   |
|----------|-----------------------------------|
| <b>R</b> | Linear Ribbed Polycarbonate       |
| <b>A</b> | Linear Ribbed High Impact Acrylic |

**Job Information** Type:

**PHILIPS**  
**LIGHTOLIER**

# Sealatron IP Low Profile

## Enclosed Industrial Wet Location Luminaire, T5/T8

### Photometry

#### Model No. IP4WA232UNVHI

LER = 66 IW = 55 BF = 0.88  
 Comparative yearly lighting energy cost per  
 1000 lumens = \$3.64

Report Number: 23312

Catalog Number: IP4WA232UNVHI

Lamps: (2) F32T8

Luminaire: Sealatron, enclosed  
 industrial with 25% high  
 impact DR acrylic lens  
 for wet/damp locations.

Ballast: Electronic

Report is based on 2850 lumens per lamp.

Efficiency: 66.9%

CIE Type: Direct - Indirect

Plane: 0-Deg. 90-Deg.

Spacing Criteria: 1.3 1.5

### Candela Distribution

| Vertical Angle | Horizontal Angle |      |      | Zonal Lumens |
|----------------|------------------|------|------|--------------|
|                | 0                | 45   | 90   |              |
| 0              | 1065             | 1065 | 1065 |              |
| 5              | 1058             | 1061 | 1061 | 84           |
| 15             | 1007             | 983  | 941  | 242          |
| 25             | 914              | 884  | 960  | 364          |
| 35             | 752              | 851  | 919  | 424          |
| 45             | 513              | 812  | 903  | 418          |
| 55             | 332              | 775  | 811  | 359          |
| 65             | 207              | 615  | 713  | 280          |
| 75             | 92               | 467  | 593  | 280          |
| 85             | 26               | 282  | 327  | 280          |
| 95             | 11               | 153  | 170  | 280          |
| 105            | 12               | 79   | 103  | 280          |
| 115            | 8                | 48   | 83   | 280          |
| 125            | 3                | 29   | 55   | 280          |
| 135            | 3                | 11   | 34   | 280          |
| 145            | 3                | 3    | 12   | 280          |
| 155            | 4                | 4    | 4    | 280          |
| 165            | 5                | 4    | 5    | 188          |
| 175            | 5                | 5    | 5    | 38           |
| 185            | 0                | 0    | 0    |              |

### Coefficients of Utilization

| Ceiling | 80%                               |    |    | 50% |    |    | 30% |    |    |
|---------|-----------------------------------|----|----|-----|----|----|-----|----|----|
|         | 70                                | 50 | 30 | 50  | 30 | 10 | 50  | 30 | 10 |
| RC      | Zonal Cavity Method               |    |    |     |    |    |     |    |    |
| RW      | Effective Floor Reflectance = 20% |    |    |     |    |    |     |    |    |
| 1       | 75                                | 70 | 67 | 72  | 68 | 65 | 65  | 61 | 77 |
| 2       | 68                                | 60 | 55 | 65  | 58 | 53 | 55  | 51 | 64 |
| 3       | 60                                | 52 | 46 | 58  | 51 | 45 | 47  | 42 | 54 |
| 4       | 56                                | 46 | 39 | 53  | 45 | 38 | 41  | 35 | 47 |
| 5       | 51                                | 40 | 34 | 48  | 40 | 33 | 36  | 32 | 41 |
| 6       | 46                                | 35 | 29 | 45  | 34 | 28 | 34  | 28 | 36 |
| 7       | 42                                | 33 | 26 | 41  | 32 | 26 | 29  | 25 | 32 |
| 8       | 40                                | 29 | 23 | 39  | 28 | 23 | 28  | 22 | 28 |
| 9       | 38                                | 27 | 20 | 35  | 27 | 20 | 25  | 20 | 26 |
| 10      | 34                                | 25 | 19 | 34  | 25 | 19 | 23  | 17 | 23 |

### Average Luminance data in candela / sq. meter

| Angle | 0°    | 45°   | 90°   |
|-------|-------|-------|-------|
| 45    | 3779. | 4883. | 5134. |
| 55    | 2966. | 5260. | 5119. |
| 65    | 2443. | 4964. | 5236. |
| 75    | 1675. | 4830. | 5402. |
| 85    | 1108. | 4239. | 4086. |

### Zonal Lumen Summary

| Zone   | Lumens | % Lamp | % Fixt. |
|--------|--------|--------|---------|
| 0-30   | 802    | 14.1   | 19.5    |
| 0-40   | 1330   | 23.3   | 32.2    |
| 0-60   | 2542   | 44.6   | 61.6    |
| 0-90   | 3812   | 66.9   | 92.4    |
| 90-180 | 312    | 5.5    | 7.6     |
| 0-180  | 4124   | 72.3   | 100.0   |



Philips Lightolier  
 e: lol.webmaster@philips.com  
 t: (508) 679-8131, Technical info. (978) 657-7600  
 w: www.lightolier.com

Sealatron IP May 11, 2012

Specifications are subject to change without notice.  
 © Koninklijke Philips Electronics N.V., 2012. All rights reserved.

**Job Information Type:**