

ALTER SOFT LIGHTS QVS2GSDOS2FT

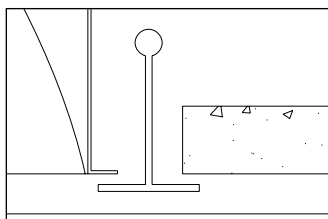
Features

- Efficiency 49.9%.
- Dual swing down solid lamp shields separated by luminous strip for easy relamping and maintenance.
- Fully recessed luminaire and with two separate lamp compartments.
- 95% Reflective Alter soft white paint finish.
- Specular interior reflector.
- One piece body for easy installation.
- Exclusive socket locks lamp into place.
- Easy access to ballast through lamp compartment.
- Fits standard T-Grid ceilings.
- Optional acrylic drop-down visual element.

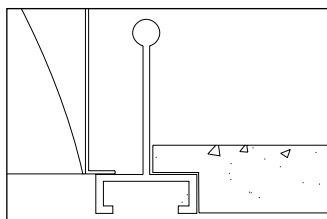


Mounting Methods / Features

Ceiling compatibility



Suited to standard exposed T-grid ceilings

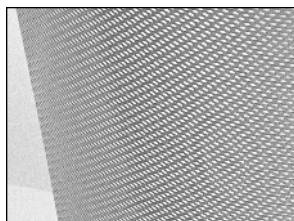


Suited to standard exposed Slot T-grid ceilings

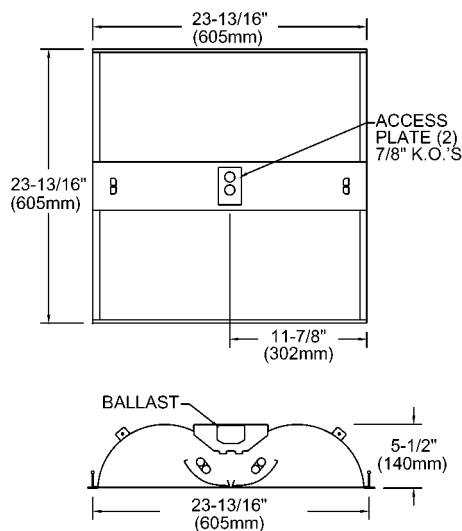
Swing down optical system for easy relamping and maintenance



Also available with microperforated mesh lamp shields



Dimensions




Job Information	Type:
Job Name:	
Cat. No.:	
Lamp(s):	
Volts/Ballast:	

Lightolier a Genlyte Thomas Company www.lightolier.com
 Technical Information: (978) 657-7600 • Fax (978) 658-0595
 631 Airport Road, Fall River, MA 02720 • (508) 679-8131 • Fax (508) 674-4710
 We reserve the right to change details of design, materials and finish.
 © 2002 Genlyte Thomas Group LLC (Lightolier Division)
 A0902 **Section 5 / Folio L10-30**

LIGHTOLIER®

ALTER SOFT LIGHTS QVS2GSDOS2FT

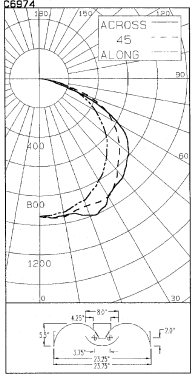
Photometry



LIGHTING SCIENCES CANADA LTD.
440 Phillip St., Unit 19, Waterloo, Ont., Canada N2L 5R9
Tel: (519) 746-3140 Fax: (519) 746-3156

CERTIFIED TEST REPORT NO. LSC6974
COMPUTED BY LSC PROGRAM **TEST-LITE**

CFI INDIRECT RECESSED FIXTURE CAT. NO. QVS2GSDOS2U41208B
WITH WHITE PAINTED INTERIOR AND SPECULAR REFLECTORS
TWO 40W PL-L COMPACT FLUORESCENT LAMPS. LUMEN RATING = 3150 LMS.
ADVANCE 120V 2-LAMP ELECTRONIC BALLAST NO. REL-2TTS40-RH-TF



CANDLEPOWER SUMMARY				OUTPUT
ANGLE	ALONG	ACROSS		LUMENS
0	939	939	939	939
5	934	942	953	962
10	924	942	955	956
15	898	931	931	953
20	883	903	923	978
25	841	867	930	983
30	800	829	928	933
35	755	797	882	890
40	704	763	818	847
45	646	727	760	812
50	585	673	706	758
55	509	593	640	703
60	440	496	565	618
65	362	412	484	486
70	277	327	362	314
75	196	225	200	141
80	118	121	79	81
85	33	35	28	29
90	0	0	0	0

ZONAL LUMENS AND PERCENTAGES			
ZONE	LUMENS	% LAMP	% LUMINAIRE
0-30	781	12.40	24.86
0-40	1311	20.82	41.73
0-60	2462	39.10	78.36
0-90	3143	49.89	100.00
40-90	1831	29.07	58.27
60-90	680	10.80	21.64
90-180	0	.00	.00
0-180	3143	49.89	100.00

** EFFICIENCY = 49.9% **

LUMINANCE SUMMARY-CD. / SQ. M. PAINT REFLECTANCE = .92 S/MH = 1.5
SC(ALONG) = 1.3, SC(ACROSS) = 1.5

ANGLE	ALONG	45	ACROSS
45	2647	3125	3417
55	2570	3247	3681
65	2480	3328	3221
75	2198	2241	1375
85	1090	935	1275

CERTIFIED BY: *Charles Dixon* DATE: MAY 24, 1997
PREPARED FOR: CANADIAN FLUORESCENT INDUSTRIES
CORNWALL, ONTARIO

TESTED ACCORDING TO IES PROCEDURES. TEST DISTANCE EXCEEDS FIVE TIMES THE GREATEST LUMINOUS OPENING OF LUMINAIRE.

LIGHTING SCIENCES CANADA LTD.
440 PHILLIP ST., UNIT 19
WATERLOO, ONTARIO CANADA N2L 5R9

CERTIFIED TEST REPORT NO. LSC6974
COMPUTED BY LSC PROGRAM **TEST-LITE**

CFI INDIRECT RECESSED FIXTURE CAT. NO. QVS2GSDOS2U41208B
WITH WHITE PAINTED INTERIOR AND SPECULAR REFLECTORS
TWO 40W PL-L COMPACT FLUORESCENT LAMPS. LUMEN RATING = 3150 LMS.
ADVANCE 120V 2-LAMP ELECTRONIC BALLAST NO. REL-2TTS40-RH-TF

COEFFICIENTS OF UTILIZATION

ZONAL CAVITY METHOD

EFFECTIVE FLOOR CAVITY REFLECTANCE = .20

CC	80			70			50			30			10			0		
WALL	70	50	30	10	70	50	30	10	50	30	10	50	30	10	50	30	10	0
RCR	0	.59	.59	.59	.58	.58	.58	.58	.55	.55	.55	.53	.53	.53	.51	.51	.51	.50
1	.55	.52	.50	.49	.53	.51	.49	.48	.49	.48	.46	.47	.46	.45	.45	.44	.44	.43
2	.50	.46	.43	.40	.49	.45	.42	.40	.43	.41	.39	.42	.40	.38	.40	.39	.37	.36
3	.46	.41	.37	.34	.44	.40	.36	.33	.38	.35	.33	.37	.34	.32	.36	.34	.32	.31
4	.42	.36	.32	.29	.41	.36	.32	.28	.34	.31	.28	.33	.30	.28	.32	.30	.27	.26
5	.38	.32	.28	.24	.37	.32	.27	.24	.30	.27	.24	.29	.26	.24	.29	.26	.23	.22
6	.35	.29	.24	.21	.34	.28	.24	.21	.27	.23	.21	.26	.23	.20	.26	.23	.20	.19
7	.32	.25	.21	.18	.31	.25	.21	.18	.24	.20	.18	.23	.20	.18	.23	.20	.17	.16
8	.30	.23	.19	.16	.29	.23	.19	.16	.22	.18	.16	.21	.18	.15	.21	.18	.15	.14
9	.28	.21	.17	.14	.27	.20	.16	.14	.20	.16	.14	.19	.16	.13	.19	.16	.13	.12
10	.26	.19	.15	.12	.25	.19	.15	.12	.18	.14	.12	.18	.14	.12	.17	.14	.12	.11

DETERMINED IN ACCORDANCE WITH CURRENT IES PUBLISHED PROCEDURES
LUMINAIRE INPUT WATTS = 66.5
LABORATORY RESULT MAY NOT BE REPRESENTATIVE OF FIELD PERFORMANCE.
BALLAST FACTORS HAVE NOT BEEN APPLIED.

Ordering Information Explanation of Catalog Number Example: QVS2GSDOS2FT120SB


QVS	2	G		2	FT		
QUALITY VISUAL STATIC Recessed direct indirect soft light optical system	FIXTURE WIDTH: 2'	CEILING TYPE: Standard exposed T-grid ceilings	LAMP SHIELD: PF = Microperforated SD = Solid	LAMP QUANTITY	LAMP/FIXTURE LENGTH: (NOMINAL 24") FT = TT5 Bi-Tube	VOLTAGE: 120V 277V 347V	OPTIONS: R = Radio Interference Filter O = Emergency Lighting System (for Canada) N = Emergency Lighting System (for U.S.) BALLAST: BE = 50W Electronic TT5 RS BR = 40W Electronic TT5 RS BX = 40W Magnetic TT5 RS PB = 40W TT5 PowerSpec Dimming* PC = 50/55W TT5 PowerSpec Dimming* SB = 40W Generic Electronic TT5 *Not available in 347V.

Specifications

MATERIALS: One piece chassis constructed from die formed 20 gauge cold rolled steel. Reflectors - 95% reflectance baked white acrylic matte paint finish. Specular interior reflector.

FINISH: Chassis exterior - phosphate undercoating, baked white acrylic matte high reflectance paint finish.

ELECTRICAL: Rapid start HPF, thermally protected class "P" ballast (Bi-tube type). If K.O.s are within 3" of ballast use wire suitable for at least 90C.

LABELS: Listed by 

Job Information Type:

Lightolier a Genlyte Thomas Company www.lightolier.com
Technical Information: (978) 657-7600 • Fax (978) 658-0595
631 Airport Road, Fall River, MA 02720 • (508) 679-8131 • Fax (508) 674-4710
We reserve the right to change details of design, materials and finish.
© 2002 Genlyte Thomas Group LLC (Lightolier Division)
A0902 **Section 5 / Folio L10-30**

LIGHTOLIER®