

QVS2GPF0B2FT

2 x 40W

ALTER SMARTVISION

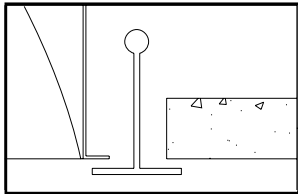
2' X 2' RECESSED DIRECT/INDIRECT FLUORESCENT
2 LAMP, TT5 BI-TUBE, 5 1/2" DEEP
MICROPERFORATED MESH LAMP SHIELD
STATIC

- Efficiency 58.5%.
- Broadcast 4: Broadcast control requires no programming of the iGEN ballasts. Dimming message are sent with a global address from the master Alter Smart Vision luminaire to up to 3 slaves luminaire with an iGEN address able ballast (DA). Each ballast receives the same command and responds uniformly.
- Swing down microperforated lamp shield for easy relamping and maintenance.
- Lamp shield specially cut to accommodate Smart Vision sensor.
- Alter soft white film on inside of mesh conceals lamp image providing balance between reflected and direct light.
- Fully recessed luminaire and lamp compartment.
- 95% Reflective Alter soft white paint finish.
- Specular interior reflector.
- One piece body for easy installation.
- Easy access to ballast through lamp compartment.
- Fits standard T-Grid ceilings.
- Optional acrylic drop-down visual element.

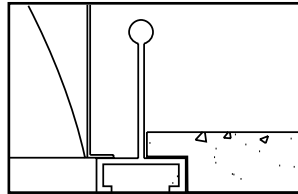


MOUNTING METHODS/FEATURES

Ceiling compatibility

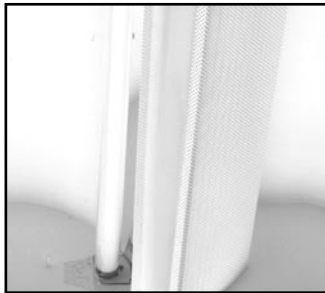


Suited to standard exposed T-grid ceilings

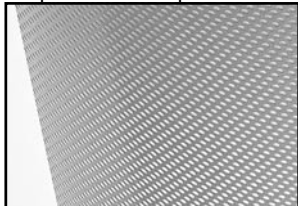


Suited to standard exposed Slot T-grid ceilings

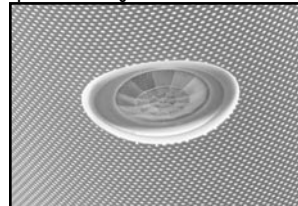
Swing down optical system for easy relamping and maintenance



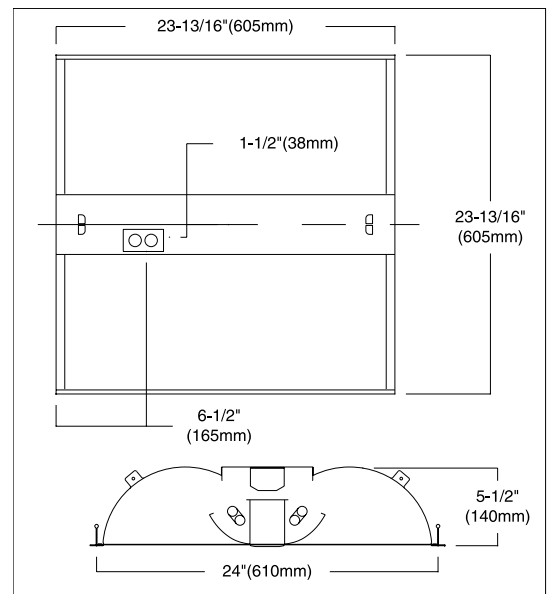
Microperforated mesh lamp shields



integrated motion and light sensor with optional dimming infrared remote control



DIMENSIONS



FIXTURE TYPE

VOLTS

| | |
|------------------|--|
| | |
| | |
| | |
| | |
| JOB INFORMATION: | |
| | |
| | |

QVS2GPFOB2FT

ALTER SMART VISION 2' X 2' RECESSED DIRECT/INDIRECT FLUORESCENT

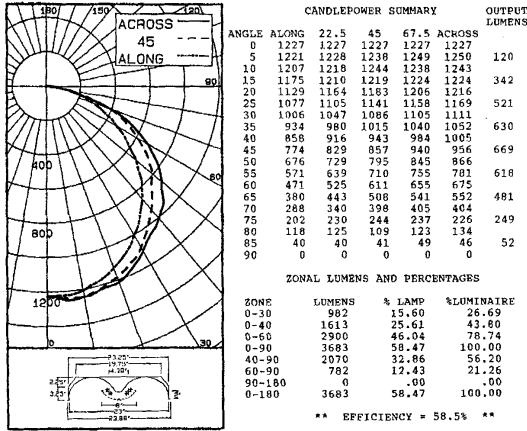


LIGHTING SCIENCES CANADA LTD.

440 Phillip St. Unit 19, Waterloo, Ont. Canada N2L 5R9
Tel (519) 746-3140 Fax (519) 746-3156

CERTIFIED TEST REPORT NO. LSC6739
COMPUTED BY LSC PROGRAM **TEST-LITE**

CFI 2x2 INDOOR RECESSED INDIRECT FIXTURE CAT. NO. QVS2GPFOB2FT120DS
WITH WHITE PAINTED INTERIOR, SPECULAR INSERT AND PERFORATED DIFFUSER
TWO 40W PL-L BIAXIAL FLUORESCENT LAMPS. LUMEN RATING = 3150 LMS.
MAGNETEK 120V TRIAD TWO-LAMP ELECTRONIC BALLAST NO. B2401120HP



| ZONE | LUMENS | % LAMP | % LUMINAIRE |
|--------|--------|--------|-------------|
| 0-30 | 982 | 15.60 | 26.69 |
| 0-40 | 1613 | 25.61 | 43.80 |
| 0-50 | 2900 | 46.04 | 78.74 |
| 0-60 | 3683 | 58.47 | 100.00 |
| 40-90 | 2070 | 32.86 | 56.20 |
| 60-90 | 792 | 12.43 | 21.26 |
| 90-180 | 0 | .00 | .00 |
| 0-180 | 3683 | 58.47 | 100.00 |

LUMINANCE SUMMARY - CD. / SQ. M.

| ANGLE | ALONG | 45 | ACROSS |
|-------|-------|------|--------|
| 45 | 3207 | 3566 | 3977 |
| 55 | 2916 | 3642 | 4003 |
| 65 | 2632 | 3534 | 3844 |
| 75 | 2282 | 2766 | 2565 |
| 85 | 1351 | 1369 | 1567 |

CERTIFIED BY: *Charles Brown* DATE: OCT 17, 1996
PREPARED FOR: CANADIAN FLUORESCENT INDUSTRIES
CORNWALL, ONTARIO

TESTED ACCORDING TO IES PROCEDURES. TEST DISTANCE EXCEEDS FIVE TIMES THE GREATEST LUMINOUS OPENING OF LUMINAIRE.

LIGHTING SCIENCES CANADA LTD.
440 PHILLIP ST. UNIT 19
WATERLOO, ONTARIO CANADA N2L 5R9

CERTIFIED TEST REPORT NO. LSC6739
COMPUTED BY LSC PROGRAM **TEST-LITE**

CFI 2x2 INDOOR RECESSED INDIRECT FIXTURE CAT. NO. QVS2GPFOB2FT120DS
WITH WHITE PAINTED INTERIOR, SPECULAR INSERT AND PERFORATED DIFFUSER
TWO 40W PL-L BIAXIAL FLUORESCENT LAMPS. LUMEN RATING = 3150 LMS.
MAGNETEK 120V TRIAD TWO-LAMP ELECTRONIC BALLAST NO. B2401120HP

COEFFICIENTS OF UTILIZATION

| ZONAL CAVITY METHOD | | EFFECTIVE FLOOR CAVITY REFLECTANCE = .20 | | | | | | | | | | | | | | | | | |
|---------------------|----|--|-----|-----|-----|-----|-----|-----|-----|-----|-----|-----|-----|-----|-----|-----|-----|-----|-----|
| CC WALL | | 80 | | | 70 | | | 50 | | | 30 | | | 10 | | | 0 | | |
| | | 70 | 50 | 30 | 10 | 70 | 50 | 30 | 10 | 50 | 30 | 10 | 50 | 30 | 10 | 50 | 30 | 10 | 0 |
| RCR | 0 | .70 | .70 | .70 | .70 | .68 | .68 | .68 | .68 | .65 | .65 | .65 | .62 | .62 | .62 | .60 | .60 | .60 | .58 |
| | 1 | .64 | .61 | .59 | .57 | .63 | .60 | .58 | .56 | .58 | .56 | .54 | .55 | .54 | .53 | .53 | .52 | .51 | .50 |
| | 2 | .59 | .54 | .51 | .47 | .57 | .53 | .50 | .47 | .51 | .48 | .46 | .49 | .47 | .45 | .48 | .46 | .44 | .43 |
| | 3 | .54 | .48 | .43 | .40 | .52 | .47 | .43 | .39 | .45 | .42 | .39 | .44 | .41 | .38 | .42 | .40 | .37 | .36 |
| | 4 | .49 | .43 | .38 | .34 | .48 | .42 | .38 | .34 | .41 | .37 | .34 | .39 | .36 | .33 | .38 | .35 | .33 | .31 |
| | 5 | .45 | .38 | .33 | .29 | .44 | .37 | .33 | .29 | .36 | .32 | .29 | .35 | .31 | .29 | .34 | .31 | .28 | .27 |
| | 6 | .42 | .34 | .29 | .25 | .41 | .34 | .29 | .25 | .32 | .28 | .25 | .32 | .28 | .25 | .31 | .27 | .25 | .23 |
| | 7 | .38 | .30 | .25 | .22 | .37 | .30 | .25 | .22 | .29 | .25 | .22 | .28 | .24 | .21 | .28 | .24 | .21 | .20 |
| | 8 | .36 | .28 | .23 | .19 | .35 | .27 | .23 | .19 | .26 | .22 | .19 | .26 | .22 | .19 | .25 | .21 | .19 | .18 |
| | 9 | .33 | .25 | .20 | .17 | .32 | .25 | .20 | .17 | .24 | .20 | .17 | .23 | .19 | .17 | .23 | .19 | .17 | .16 |
| | 10 | .31 | .23 | .18 | .15 | .30 | .22 | .18 | .15 | .22 | .18 | .15 | .21 | .17 | .15 | .21 | .17 | .15 | .14 |

DETERMINED IN ACCORDANCE WITH CURRENT IES PUBLISHED PROCEDURES
LUMINAIRE INPUT WATTS = 64.9
LABORATORY RESULT MAY NOT BE REPRESENTATIVE OF FIELD PERFORMANCE.
BALLAST FACTORS HAVE NOT BEEN APPLIED.

ORDERING INFORMATION Explanation of Catalogue Number Example: QVS2GPFOB2FT120DS

| | | | | | | | | | |
|---|---------------------|--|--------------------------------------|---|---------------|---|----------------|--|---------------------------------------|
| QVS | 2 | G | PF | OB | 2 | FT | 120 | DS | |
| QUALITY VISUAL STATIC Recessed direct indirect soft light optical system | FIXTURE WIDTH 2' | CEILING TYPE Standard exposed T-grid ceilings | LAMP SHIELD PF = Micro-perforated | LAMP SHIELD DETAILS OB = One-piece lamp shield with sensor | LAMP QUANTITY | LAMP/FIXTURE LENGTH (NOMINAL 24") FT = TT5 Bi-tube | VOLTAGE 120 | BALLAST TYPE DS = Gen Broadcast 4 Sensor/ iGEN ballast* | OPTIONS R = Radio Interface Filter |

SPECIFICATIONS

MATERIALS: One piece chassis constructed from die formed 20 gauge cold rolled steel. **Reflectors** - 95% reflectance baked white acrylic matte paint finish. Specular aluminum interior reflector. Soft white acrylic film on inside of lamp shield conceals lamp image.

FINISH: Chassis exterior - phosphate undercoating, baked white acrylic matte paint finish.

ELECTRICAL: Rapid start HPF, thermally protected class "P" ballast (Bi-tube type). If K.O.s are within 3" of ballast use wire suitable for at least 90C.

LABELS: Listed by CSA, UL

We reserve the right to change, materials and finish in any way that will not alter installed appearance or reduce function and performance.

Genlyte Thomas Company

631 Airport Road, Fall River, MA 02720 - Tel. (508) 679-8131
C.F.I. Division of Canlyte, Inc.
525 Education Road, Cornwall, Ontario
Canada K6H 6C7 - (613) 938-6221