

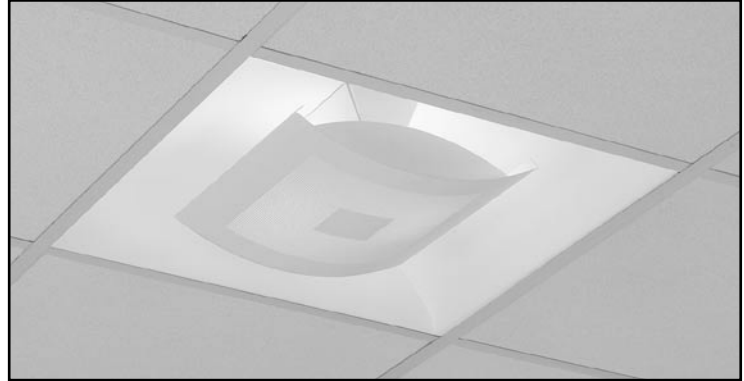
QVS2GPCSQ2TT

2 x 32W

ALTER WINDOWS

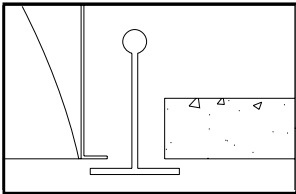
2' X 2' RECESSED FLUORESCENT
2 LAMP, TTT TRIPLE TUBE, 8" DEEP
SOLID WHITE PERIMETER LAMP SHIELD / WHITE
MESH INNER AREA WITH SOLID CENTER STATIC

- Efficiency 40.7%.
- Utilizes two triple tube (TTT) lamps.
- Alter soft white film inside of microperforated lamp shield conceals lamp image and provides balance between reflected and direct light.
- Choice of two lamp shields
- 95% reflective Alter soft white paint finish.
- Multi-texture lamp shield provides a gradation of light effect that creates visual interest and architectural detail.
- Unique symmetrical design elements.
- Fits standard T-grid, exposed slot-T-grid.
- Swing-down design for easy relamping.
- No visible welding, screws, latches, springs, holes, rivets or plastic supports.
- Easy access to ballast through lamp compartment.

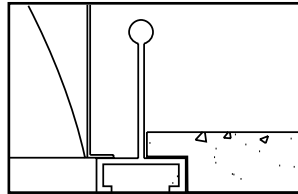


MOUNTING METHODS/FEATURES

Ceiling compatibility

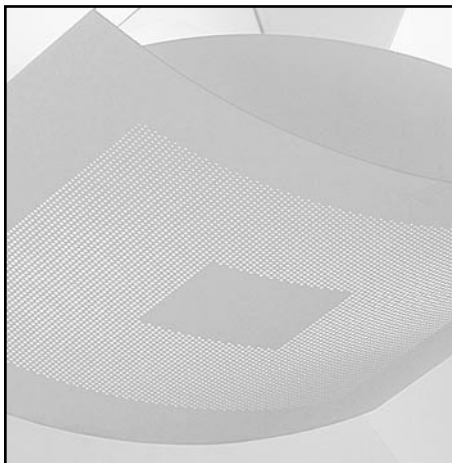


Suited to standard exposed T-grid ceilings

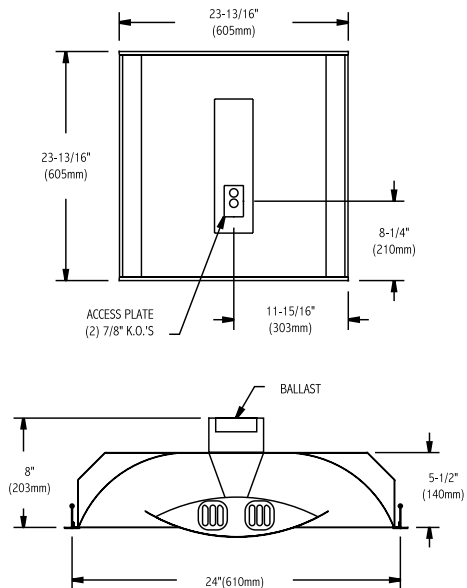


Suited to standard exposed Slot T-grid ceilings

Multi-Texture Lamp Shield



DIMENSIONS



FIXTURE TYPE	VOLTS
JOB INFORMATION: _____	

QVS2GPCSQ2TT

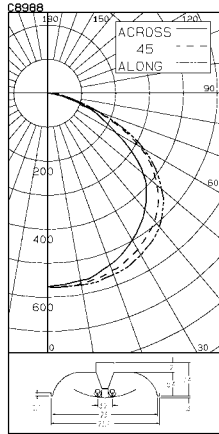
ALTER WINDOW 2' X 2' RECESSED FLUORESCENT

CERTIFIED TEST REPORT NO. LSC8988
COMPUTED BY LSC PROGRAM **TEST-LITE**

LIGHTOLIER ALTER WINDOWS 2x2 LUMINAIRE CAT. NO. QVS2GPCSQ2TT120TC
WITH WHITE PAINTED REFLECTOR AND SOLID CENTER LAMP SHIELD
TWO 32W TRIPLE TUBE COMPACT FLUORESCENT LAMPS. LUMEN RATING = 2200 LMS.
ADVANCE 120-277V 2-LAMP ELECTRONIC BALLAST NO. ICF-2S42-M2-LD

LIGHTING SCIENCES CANADA LTD.
440 PHILLIP ST. UNIT 19
WATERLOO, ONTARIO CANADA N2L 5R9

CERTIFIED TEST REPORT NO. LSC8988
COMPUTED BY LSC PROGRAM **TEST-LITE**



CANDLEPOWER SUMMARY				OUTPUT LUMENS			
ANGLE ALONG	22.5	45	67.5	ACROSS			
0	569	569	569	569	569		
5	571	570	570	566	564		55
10	572	574	568	562	559		
15	573	570	563	556	552		159
20	567	565	555	547	537		
25	562	557	545	530	520		250
30	549	542	531	511	499		
35	534	525	511	491	474		318
40	512	507	491	466	445		
45	480	477	461	434	411		349
50	438	438	420	397	368		
55	388	386	374	341	305		321
60	326	323	312	271	233		
65	249	247	232	204	177		221
70	160	159	155	151	129		
75	91	89	90	86	69		95
80	53	49	41	43	34		
85	23	16	16	14	10		19
90	2	0	0	0	0		

ZONAL LUMENS AND PERCENTAGES			
ZONE	LUMENS	% LAMP	% LUMINAIRE
0-30	464	10.55	25.96
0-40	782	17.78	43.74
0-60	1452	33.02	81.21
0-90	1788	40.66	100.00
40-90	1006	22.67	56.26
60-90	336	7.64	18.79
90-180	0	0.00	0.00
0-180	1788	40.66	100.00

** EFFICIENCY = 40.7% **

LUMINANCE SUMMARY-CD. / SQ. M. PAINT REFLECTANCE = .95 S/MH = 1.3
SC(ALONG) = 1.4, SC(ACROSS) = 1.3

ANGLE	ALONG	45	ACROSS
45	1988	1915	1710
55	1982	1920	1562
65	1725	1613	1230
75	1033	1024	782
85	770	531	323

CERTIFIED BY: DATE: JAN 7, 2002
PREPARED FOR: LIGHTOLIER LACHINE, QUEBEC

TESTED ACCORDING TO IES PROCEDURES. TEST DISTANCE EXCEEDS FIVE TIMES THE GREATEST LUMINOUS OPENING OF LUMINAIRE.

LIGHTOLIER ALTER WINDOWS 2x2 LUMINAIRE CAT. NO. QVS2GPCSQ2TT120TC
WITH WHITE PAINTED REFLECTOR AND SOLID CENTER LAMP SHIELD
TWO 32W TRIPLE TUBE COMPACT FLUORESCENT LAMPS. LUMEN RATING = 2200 LMS.
ADVANCE 120-277V 2-LAMP ELECTRONIC BALLAST NO. ICF-2S42-M2-LD

COEFFICIENTS OF UTILIZATION

ZONAL CAVITY METHOD

EFFECTIVE FLOOR CAVITY REFLECTANCE = .20

CCR WALL	80			70			50			30			10			0			
	70	50	30	10	70	50	30	10	50	30	10	50	30	10	0				
RCR	0	.48	.48	.48	.48	.47	.47	.47	.47	.45	.45	.45	.43	.43	.43	.41	.41	.41	.41
1	.45	.43	.41	.40	.44	.42	.41	.39	.40	.39	.38	.39	.38	.37	.37	.36	.36	.35	.35
2	.41	.38	.36	.33	.40	.37	.35	.33	.36	.34	.32	.35	.33	.32	.33	.32	.31	.31	.30
3	.38	.34	.31	.28	.37	.33	.30	.28	.32	.29	.27	.31	.29	.27	.30	.28	.26	.26	.26
4	.35	.30	.27	.24	.34	.29	.26	.24	.28	.26	.24	.28	.25	.23	.27	.25	.23	.22	.22
5	.32	.27	.23	.21	.31	.26	.23	.21	.25	.23	.20	.25	.22	.20	.24	.22	.20	.19	.19
6	.29	.24	.20	.18	.28	.23	.20	.18	.23	.20	.18	.22	.19	.17	.21	.19	.17	.16	.16
7	.27	.21	.18	.15	.26	.21	.18	.15	.20	.17	.15	.20	.17	.15	.19	.17	.15	.14	.14
8	.25	.19	.16	.13	.24	.19	.16	.13	.18	.15	.13	.18	.15	.13	.17	.15	.13	.12	.12
9	.23	.17	.14	.12	.22	.17	.14	.12	.17	.14	.12	.16	.13	.11	.16	.13	.11	.11	.11
10	.21	.16	.12	.10	.21	.15	.12	.10	.15	.12	.10	.15	.12	.10	.14	.12	.10	.09	.09

DETERMINED IN ACCORDANCE WITH CURRENT IES PUBLISHED PROCEDURES
LUMINAIRE INPUT WATTS = 67.4
LABORATORY RESULT MAY NOT BE REPRESENTATIVE OF FIELD PERFORMANCE.
BALLAST FACTORS HAVE NOT BEEN APPLIED.

ORDERING INFORMATION Explanation of Catalogue Number Example: QVS2GPCSQ2TT120TC

QVS	2	G	PC	SQ	2	TT	120	TC	
FAMILY QVS: Quality Visual Louver	LUMINAIRE WIDTH 24"	CEILING TYPE G=Grid	LAMP SHIELD PC = solid white perimeter lamp shield / white mesh inner area with solid center PA = solid white perimeter lamp shield / white mesh center	SHIELD DETAILING SQ = Square Windows basket	LAMP QUANTITY 2	LAMP TT = TTT Triple Tube	VOLTAGE 120,277 347	BALLAST TC = Electronic 2 x 32W TTT 4 pin TD = Electronic 2 x 42W TTT 4 pin PD = Electronic Dimming 2 x 42W TTT 4 pin*	OPTIONS

SPECIFICATIONS

MATERIALS: One piece chassis constructed from die formed 20 gauge cold rolled steel. **Reflectors** - 95% reflectance baked white acrylic matte paint finish. Soft white acrylic film on inside of lamp shield conceals lamp image.

FINISH: Chassis exterior - phosphate undercoating, baked white acrylic matte high reflectance paint finish.

ELECTRICAL: Rapid start HPF, thermally protected class "P" ballast (Bi-tube type). If K.O.s are within 3" of ballast use wire suitable for at least 90C.
LABELS: Listed by CSA, UL

We reserve the right to change, materials and finish in any way that will not alter installed appearance or reduce function and performance.

Genlyte Thomas Company

631 Airport Road, Fall River, MA 02720 - Tel. (508) 679-8131
C.F.I. Division of Canlyte, Inc.
525 Education Road, Cornwall, Ontario
Canada K6H 6C7 - (613) 938-6221