

ALTER WAL-LYTER QVS1GPFAD2FT

Page 1 of 2

1'x4' RECESSED DIRECT/INDIRECT FLUORESCENT, 2 LAMP, TT5 BI-TUBE TRIPLE TUBE, 5" DEEP, MICROPERFORATED MESH LAMP SHIELD, STATIC

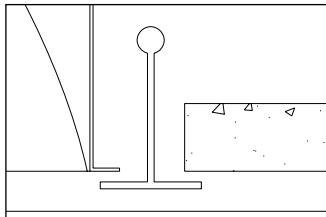
Features

- Efficiency 49.2%.
- Swing down microperforated lamp shield for easy relamping and maintenance.
- Alter soft white film on inside of mesh conceals lamp image providing balance between reflected and direct light.
- Asymmetrical optical system provides a soft uniform wall wash.
- Fully recessed luminaire and lamp compartment.
- 95% Reflective Alter soft white paint finish.
- One piece body for easy installation.
- Exclusive socket locks lamp into place.
- Easy access to ballast through lamp compartment.
- Fits standard T-Grid ceilings.

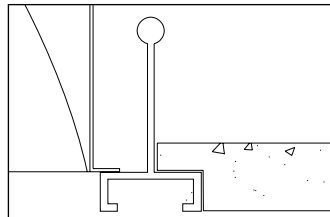


Mounting Methods / Features

Ceiling compatibility

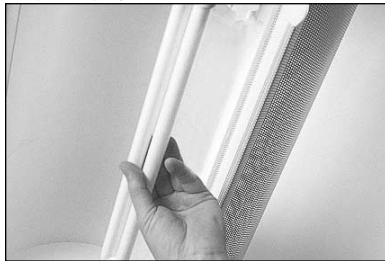


Suited to standard exposed T-grid ceilings

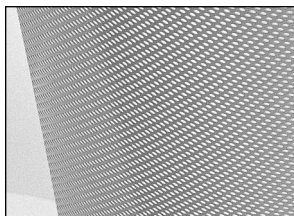


Suited to standard exposed Slot T-grid ceilings

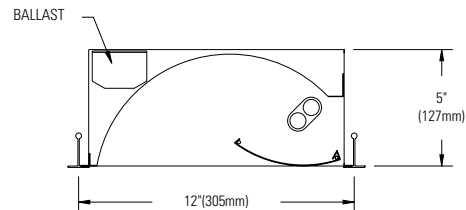
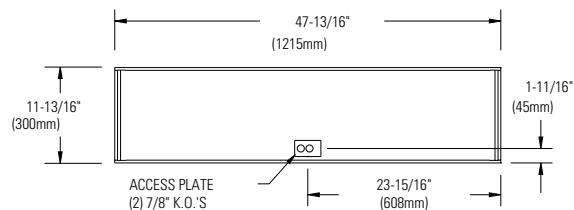
Swing down optical system for easy relamping and maintenance



Microperforated mesh lamp shields



Dimensions



Job Information

Type:

Job Name:

Cat. No.:

Lamp(s):

Volts/Ballast:

Lightolier a Genlyte Thomas Company

www.lightolier.com

Technical Information: (978) 657-7600 • Fax (978) 658-0595

631 Airport Road, Fall River, MA 02720 • (508) 679-8131 • Fax (508) 674-4710

We reserve the right to change details of design, materials and finish.

© 2002 Genlyte Thomas Group LLC (Lightolier Division)

A0902

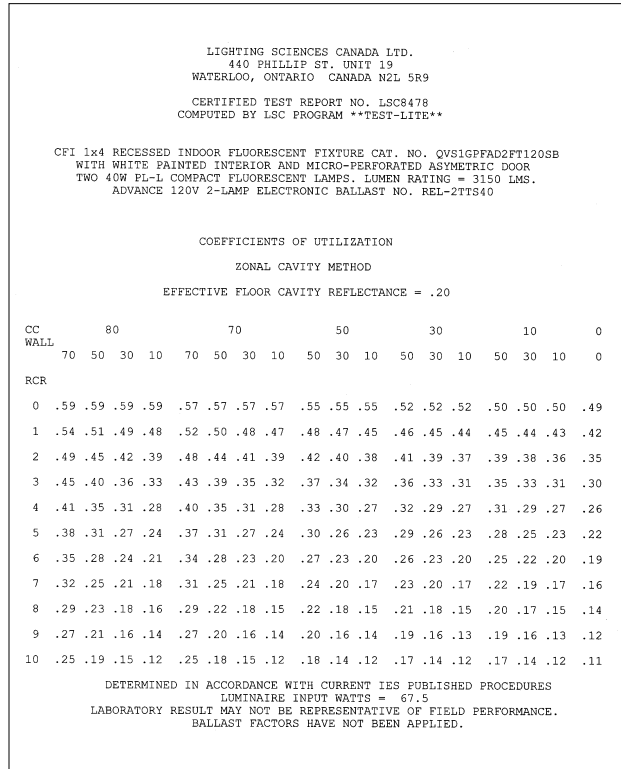
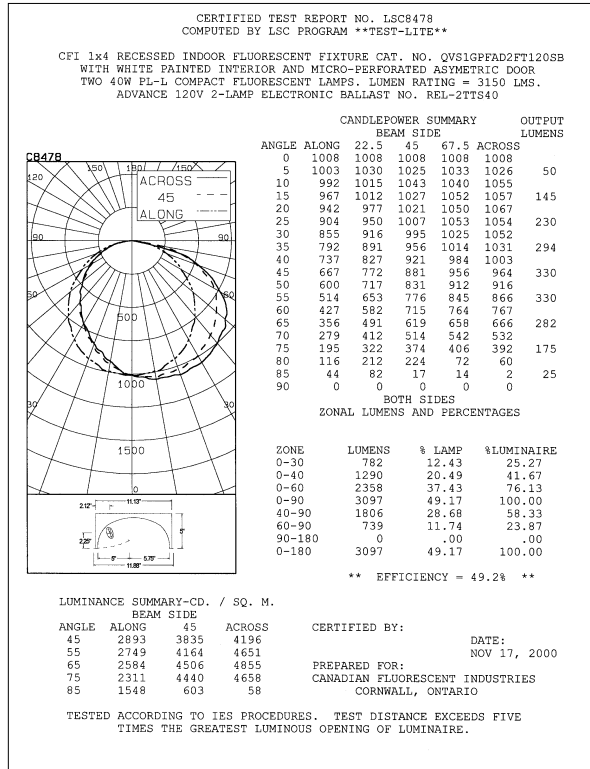
Section 5 / Folio L20-41

LIGHTOLIER®

ALTER WAL-LYTER QVS1GPFAD2FT

1'x4' RECESSED DIRECT/INDIRECT FLUORESCENT, 2 LAMP, TT5 BI-TUBE TRIPLE TUBE, 5" DEEP, MICROPERFORATED MESH LAMP SHIELD, STATIC

Photometry



Ordering Information

Explanation of Catalog Number. Example: QVS1GPFAD2FT120SB

QVS	1	G	PF	AD	2	FT				
QUALITY VISUAL STATIC Recessed direct indirect soft light optical system	FIXTURE WIDTH: 1'	CEILING TYPE: Standard exposed T-grid ceilings	LAMP SHIELD: PF = Microperforated	SHIELD DETAILING: AD = Asymmetrical Distribution	LAMP QUANTITY	LAMP/FIXTURE LENGTH: (NOMINAL 48") FT = TT5 Bi-Tube	VOLTAGE: 120V 277V 347V	OPTIONS: R = Radio Interference Filter O = Emergency Lighting System (for Canada) N = Emergency lighting system (for U.S.)		
							BALLAST: BE = 50W Electronic TT5 RS BR = 40W Electronic TT5 RS BX = 40W Magnetic TT5 RS PB = 40W TT5 PowerSpec Dimming* PC = 50/55W TT5 PowerSpec Dimming* SB = 40W Generic Electronic TT5	*Not available in 347V.		

Specifications

MATERIALS: One piece chassis constructed from die formed 20 gauge cold rolled steel. Reflectors - 95% reflectance baked white acrylic matte paint finish. Soft white acrylic film on inside of lamp shield conceals lamp image.

FINISH: Chassis exterior - phosphate undercoating, baked white acrylic matte high reflectance paint finish.

ELECTRICAL: Rapid start HPF, thermally protected class "P" ballast (Bi-tube type). If K.O.s are within 3" of ballast use wire suitable for at least 90C.

SOCKET: Automatically locks lamp into place, lamp released by quick thumb release tab.

LABELS: Listed by



Job Information

Type:

Lightolier a Genlyte Thomas Company www.lightolier.com

Technical Information: (978) 657-7600 • Fax (978) 658-0595

631 Airport Road, Fall River, MA 02720 • (508) 679-8131 • Fax (508) 674-4710

We reserve the right to change details of design, materials and finish.

© 2002 Genlyte Thomas Group LLC (Lightolier Division)

A0902

Section 5 / Folio L20-41

LIGHTOLIER®