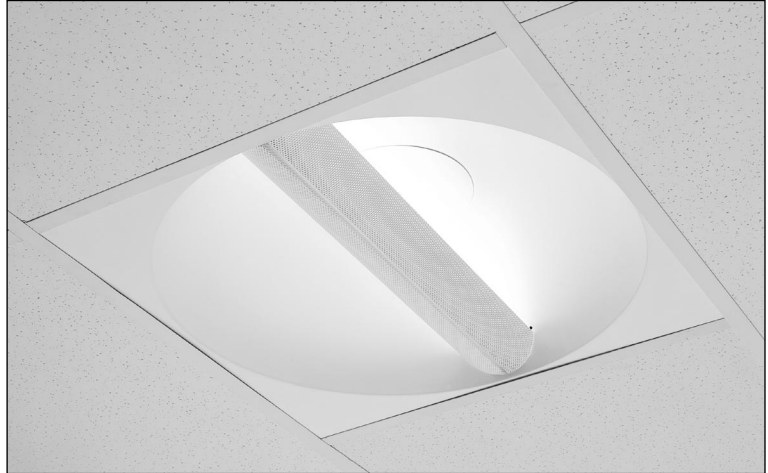


QVR2GPFOS1FT 1 x 50W

ALTER SOFT LIGHTS

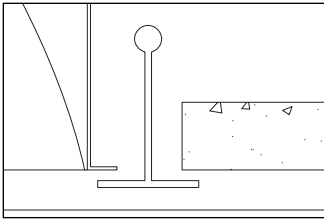
2' X 2' ROUND RECESSED DIRECT/INDIRECT FLUORESCENT
 1 LAMP, TT5 BI-TUBE, 7 15/16" DEEP
 MICROPERFORATED MESH LAMP SHIELD
 STATIC

- Efficiency 53.8%.
- Dual swing down microperforated lamp shields separated by luminous strip for easy relamping and maintenance.
- Alter soft white film on inside of mesh conceals lamp image providing balance between reflected and direct light.
- Fully recessed luminaire.
- 95% Reflective Alter soft white paint finish.
- One piece body for easy installation.
- Exclusive socket locks lamp into place.
- Easy access to ballast through lamp compartment.
- Fits standard T-Grid ceilings.



MOUNTING METHODS/FEATURES

Ceiling compatibility

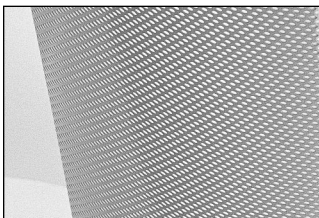


Suited to standard exposed T-grid ceilings

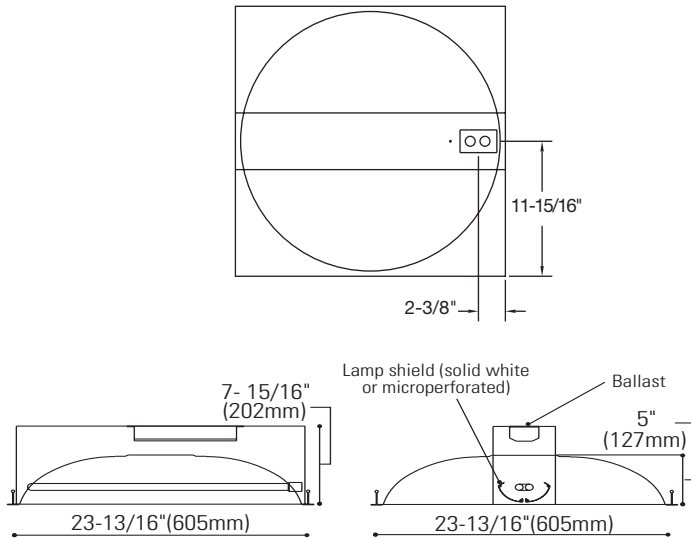
Swing down optical system for easy relamping and maintenance



Microperforated mesh lamp shields



DIMENSIONS



FIXTURE SCHEDULE

TYPE	CATALOG NO.	VOLTS

REMARKS :


LIGHTOLIER®
 a Genlyte Thomas Company

QVR2GPFOS1FT

ALTER SOFT LIGHTS

2' X 2' ROUND RECESSED DIRECT/INDIRECT FLUORESCENT

PHOTOMETRY



LIGHTING SCIENCES CANADA LTD.
440 Phillip St., Unit 19, Waterloo, Ont., Canada N2L 5R9
Tel: (519) 746-3140 Fax: (519) 746-3156

CERTIFIED TEST REPORT NO. LSC7139
COMPUTED BY LSC PROGRAM **TEST-LITE**

CFI ALTER 2x2 ROUND RECESSED INDIRECT FIXTURE CAT. NO. QVR2GPFOS150120SB
WITH WHITE PAINTED INTERIOR AND PERFORATED LAMP SHIELDS WITH TRANSLUCENT LENSES
ONE 50W BIAK COMPACT FLUORESCENT LAMP. LUMEN RATING = 4000 LMS.
VALMONT 120V 1-LAMP ELECTRONIC BALLAST NO. E1505B120G01

CANDLEPOWER SUMMARY				OUTPUT LUMENS	
ANGLE	ALONG	45	67.5	ACROSS	
0	669	669	669	669	669
5	665	665	665	668	669
10	656	661	664	668	673
15	643	648	658	661	666
20	623	631	642	653	659
25	597	610	624	644	650
30	567	581	604	628	640
35	529	546	582	613	626
40	485	507	553	594	609
45	434	465	520	565	583
50	382	417	480	532	553
55	324	364	435	491	521
60	267	311	387	444	467
65	209	257	331	368	387
70	156	200	263	263	240
75	103	140	166	134	103
80	53	71	70	57	55
85	14	18	18	17	24
90	0	0	0	0	0

ZONAL LUMENS AND PERCENTAGES			
ZONE	LUMENS	% LAMP	% LUMINAIRE
0-30	537	13.43	24.95
0-40	899	22.49	41.76
0-60	1678	41.95	77.91
0-90	2153	53.85	100.00
40-90	1284	31.36	59.24
60-90	475	11.90	22.09
90-180	0	0.00	0.00
0-180	2153	53.85	100.00

** EFFICIENCY = 53.8% **

LUMINANCE SUMMARY-CD. / SQ. M. PAINT REFLECTANCE = .93 S/MH = 1.4
SC(ALONG) = 1.3, SC(ACROSS) = 1.4

ANGLE	ALONG	45	ACROSS
45	2395	2875	3224
55	2203	2969	3555
65	1925	3062	3393
75	1549	2502	1551
85	613	824	768

CERTIFIED BY: *Charles Sisson* DATE: NOV 7, 1997
PREPARED FOR: CANADIAN FLUORESCENT INDUSTRIES
CORNWALL, ONTARIO

TESTED ACCORDING TO IES PROCEDURES. TEST DISTANCE EXCEEDS FIVE TIMES THE GREATEST LUMINOUS OPENING OF LUMINAIRE.

LIGHTING SCIENCES CANADA LTD.
440 PHILLIP ST. UNIT 19
WATERLOO, ONTARIO CANADA N2L 5R9

CERTIFIED TEST REPORT NO. LSC7139
COMPUTED BY LSC PROGRAM **TEST-LITE**

CFI ALTER 2x2 ROUND RECESSED INDIRECT FIXTURE CAT. NO. QVR2GPFOS150120SB
WITH WHITE PAINTED INTERIOR AND PERFORATED LAMP SHIELDS WITH TRANSLUCENT LENSES
ONE 50W BIAK COMPACT FLUORESCENT LAMP. LUMEN RATING = 4000 LMS.
VALMONT 120V 1-LAMP ELECTRONIC BALLAST NO. E1505B120G01

COEFFICIENTS OF UTILIZATION

ZONAL CAVITY METHOD

EFFECTIVE FLOOR CAVITY REFLECTANCE = .20

CC WALL	80	70	50	30	10	0								
70	50	30	10	70	50	30	10	50	30	10	50	30	10	0

RCR

0	.64	.64	.64	.64	.63	.63	.63	.63	.60	.60	.60	.57	.57	.57	.55	.55	.55	.54	
1	.59	.57	.54	.53	.58	.55	.53	.52	.53	.51	.50	.51	.50	.48	.48	.49	.48	.47	.46
2	.54	.50	.46	.43	.53	.49	.46	.43	.47	.44	.42	.45	.43	.41	.44	.42	.40	.39	
3	.49	.44	.40	.36	.48	.43	.39	.36	.41	.38	.35	.40	.37	.35	.39	.36	.34	.33	
4	.45	.39	.34	.31	.44	.38	.34	.31	.37	.33	.30	.36	.33	.30	.35	.32	.30	.28	
5	.41	.35	.30	.26	.40	.34	.29	.26	.33	.29	.26	.32	.28	.26	.31	.28	.25	.24	
6	.38	.31	.26	.23	.37	.30	.26	.23	.29	.25	.22	.28	.25	.22	.28	.24	.22	.21	
7	.35	.27	.23	.20	.34	.27	.23	.19	.26	.22	.19	.25	.22	.19	.25	.21	.19	.18	
8	.32	.25	.20	.17	.31	.24	.20	.17	.24	.20	.17	.23	.19	.17	.22	.19	.17	.16	
9	.30	.23	.18	.15	.29	.22	.18	.15	.21	.18	.15	.21	.17	.15	.20	.17	.14	.14	
10	.28	.20	.16	.13	.27	.20	.16	.13	.20	.16	.13	.19	.15	.13	.19	.15	.13	.12	

DETERMINED IN ACCORDANCE WITH CURRENT IES PUBLISHED PROCEDURES
LUMINAIRE INPUT WATTS = 53.7
LABORATORY RESULT MAY NOT BE REPRESENTATIVE OF FIELD PERFORMANCE.
BALLAST FACTORS HAVE NOT BEEN APPLIED.

*Not available in 347V.

ORDERING INFORMATION Explanation of Catalog Number Example: QVR2GPFOS1FT120BE


<div style="border: 1px solid black; padding: 2px; width: 40px; margin: 0 auto;">QVR</div> <p>QUALITY VISUAL STATIC Recessed direct indirect soft light optical system</p>	<div style="border: 1px solid black; padding: 2px; width: 40px; margin: 0 auto;">2</div> <p>FIXTURE WIDTH: 2'</p>	<div style="border: 1px solid black; padding: 2px; width: 40px; margin: 0 auto;">G</div> <p>CEILING TYPE: Standard exposed T-grid ceilings</p>	<div style="border: 1px solid black; padding: 2px; width: 40px; margin: 0 auto;">PF</div> <p>LAMP SHIELD: PF = Microperforated</p>	<div style="border: 1px solid black; padding: 2px; width: 40px; margin: 0 auto;">OS</div> <p>OS = Open slot (no acrylic)</p>	<div style="border: 1px solid black; padding: 2px; width: 40px; margin: 0 auto;">1</div> <p>LAMP QUANTITY</p>	<div style="border: 1px solid black; padding: 2px; width: 40px; margin: 0 auto;">FT</div> <p>LAMP/FIXTURE LENGTH: (NOMINAL 24") FT = TT5 Bi-Tube</p>	<div style="border: 1px solid black; padding: 2px; width: 40px; margin: 0 auto;">120</div> <p>VOLTAGE: 120V 277V 347V</p>	<div style="border: 1px solid black; padding: 2px; width: 40px; margin: 0 auto;">BE</div> <p>BALLAST: BE = 50W Electronic TT5 RS BR = 40W Electronic TT5 RS BX = 40W Magnetic TT5 RS PB = 40W TT5 PowerSpec Dimming* PC = 50/55W TT5 PowerSpec Dimming* SB = 40W Generic Electronic TT5</p>	<div style="border: 1px solid black; padding: 2px; width: 40px; margin: 0 auto;"></div> <p>OPTIONS: R = Radio Interference Filter</p>
--	---	--	--	--	---	--	---	---	---

SPECIFICATIONS

MATERIALS: One piece chassis constructed from die formed 20 gauge cold rolled steel. Reflectors - 95% reflectance baked white acrylic matte paint finish. Soft white acrylic film on inside of lamp shield conceals lamp image.

FINISH: Chassis exterior - phosphate undercoating, baked white acrylic matte high reflectance paint finish.

ELECTRICAL: Rapid start HPF, thermally protected class "P" ballast (Bi-tube type). If K.Os are within 3" of ballast use wire suitable for at least 90C.

LABELS: Listed by 

WE RESERVE THE RIGHT TO CHANGE DESIGN, MATERIALS AND FINISH, IN ANY WAY THAT WILL NOT ALTER INSTALLED APPEARANCE OR REDUCE FUNCTION AND PERFORMANCE.

LIGHTOLIER®

a Genlyte Thomas Company

631 AIRPORT ROAD, FALL RIVER, MA 02720 • (508) 679-8131
C.F.I. DIVISION OF CANLYTE, INC.
525 EDUCATION ROAD, CORNWALL, ONTARIO
CANADA K6H 6C7 • (613) 938-6221