

# ALTER HIGH EFFICIENCY QHE1GPFOP128 OR 228

1' X 4' RECESSED DIRECT/INDIRECT FLUORESCENT 1 OR 2 LAMP, T5  
5" DEEP MICROPERFORATED MESH LAMP SHIELD, STATIC

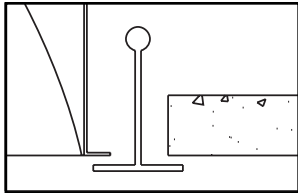
## Features

- Efficiency 57.6% (2 lamp T5).
- Swing down microperforated lamp shield for easy relamping and maintenance.
- Alter soft white film on inside of mesh conceals lamp image and provide balance between reflected light and direct light.
- Fully recessed luminaire and lamp compartment.
- 95% Reflective Alter soft white paint finish.
- One piece body for easy installation.
- Easy access to ballast through lamp compartment.
- Fits standard T-Grid ceilings. (G type)

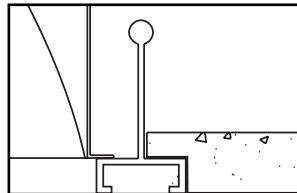


## Mounting Methods / Features

Ceiling compatibility

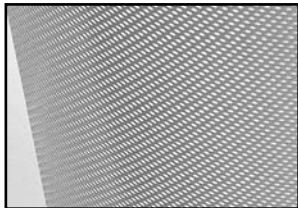


Suited to standard exposed T-grid ceilings

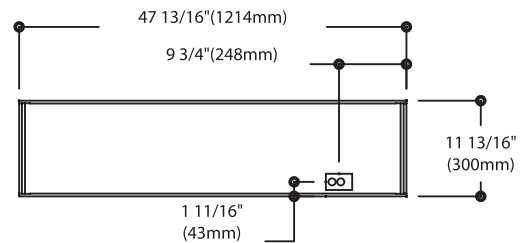
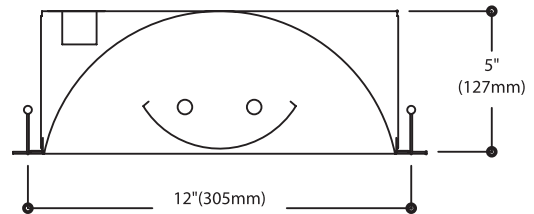


Suited to standard exposed Slot T-grid ceilings

Microperforated mesh lamp shield



## Dimensions



## Job Information

## Type:

**Job Name:**  
**Cat. No.:**

**Lamp(s):**  
**Volts/Ballast:**

**Lightolier** a Genlyte Thomas Company  
 Technical Information: (978) 657-7600 – (978) 658-0595  
 631 Airport Road, Fall River, MA 02720 – (508) 679-8131  
 C.F.I. Division of Canlyte, Inc.  
 525 Education Road, Cornwall, Ontario, Canada K6H 6C7 – (613) 938-6221  
 We reserve the right to change details of design, materials and finish.  
 © 2004 Genlyte Thomas Group LLC (Lightolier Division)  
 A0902 Section 5 / Folio L20-38

**LIGHTOLIER®**

