

# PNB SERIES 2U/3U

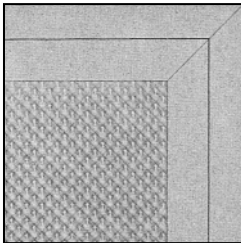
## PRISMALYTE (PNB)

2'x2' SURFACE BOX FLUORESCENT  
PREMIUM SPECIFICATION GRADE LENSED  
2-6"U LAMP T8/T12, 3-1.6"U LAMP T8 OR TT5

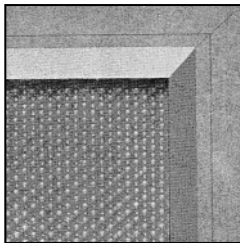
- Only 5-1/2" deep.
- Efficiency 57.3% (2U lamp T8).
- 1.4 spacing mounting ratio (2 lamp T8).
- 20 gauge welded steel body.
- 45° mitered corners (body and door frame).
- Side mounted ballast for cooler operation.
- Fully enclosed wiring.
- Available in three lens frame styles.
- Door jamb with positive light stop.
- Spring-loaded latches (floating door).
- Cam action latches (full-size door).
- Reversible door frame hinge.
- Available with floating or full size doors.
- Matches Prismalyte (PRA/PRS) recessed.
- Frames interchangeable with Parabaffle (MLB).
- Meets NYC Code requirements.



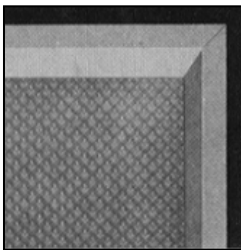
### FEATURES



(FA) flat full-size aluminum frame.

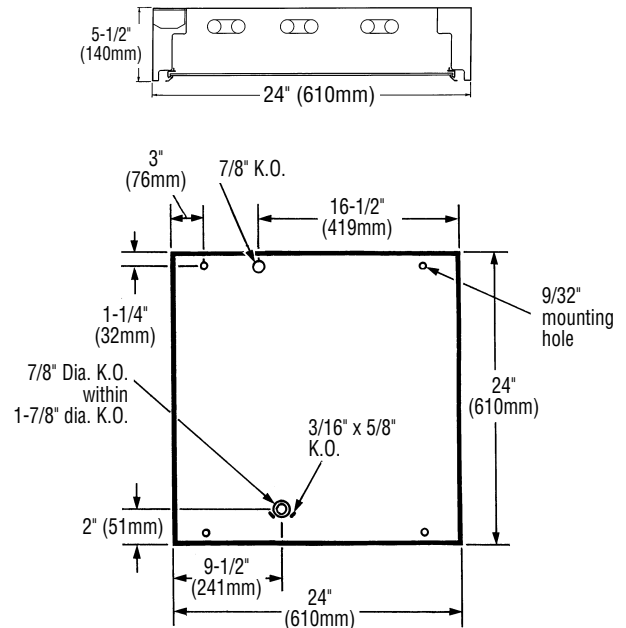


(RA) regressed full-size aluminum frame.



(RF) 1/2" regressed floating aluminum frame.

### DIMENSIONS



FIXTURE TYPE	VOLTS
JOB INFORMATION: _____	

**LIGHTOLIER®**

# PNB SERIES 2U/3U

# PRISMALYTE (PNB) 2'x2' SURFACE BOX FLUORESCENT

## PHOTOMETRY

45 Industrial Way  
Wilmington, MA 01887  
(508) 657-7600

REPORT NO.: G92067      DATE: 02-19-1992  
 CATALOG NO.: PNB2SFAVA2U6120SO  
 LAMP(S): 2 31W/55/T8, EACH RATED 2950 LUMENS  
 LUMINAIRE: 2X2 SURFACE LUMINAIRE 2U-LAMP  
 W/FLS ALUM FRM & PAT.#12 ACRYLIC LNS  
 VOLTS: 120      WATTS: 92 MEASURED

**CANDELA DISTRIBUTION**

0-0	22.5	45.0	67.5	90.0
0	1497	1497	1497	1497
5	1490	1489	1489	1493
15	1425	1432	1450	1472
25	1304	1323	1373	1415
35	1114	1150	1230	1301
45	795	793	878	961
55	439	427	465	480
65	229	228	237	240
75	137	124	133	132
85	23	34	30	25
90	1	1	1	1

**FLUX**

0-0	22.5	45.0	67.5	90.0
0	1497	1497	1497	1497
5	1490	1489	1489	1493
15	1425	1432	1450	1472
25	1304	1323	1373	1415
35	1114	1150	1230	1301
45	795	793	878	961
55	439	427	465	480
65	229	228	237	240
75	137	124	133	132
85	23	34	30	25
90	1	1	1	1

**ZONAL LUMEN SUMMARY**

ZONE	LUMENS	%LAMP	%FIXT
0-30	1155	19.7	34.5
0-40	1949	32.5	56.7
0-60	3032	50.5	85.2
0-90	3438	57.3	100.0
90-180	0	0.0	0.0
0-180	3438	57.3	100.0

**TOTAL LUMINAIRE EFFICIENCY**: 57.3 %  
**TOTAL REFLECTANCE OF PAINT**: 90.0 %  
**CIE TYPE**: DIRECT  
**PLANE**: 0-DEG 90-DEG  
**SPACING CRITERIA**: 1, 2, 1, 3  
**SHIELDING ANGLES**: 0, 90  
**LUMINOUS LENGTH**: 21.000 21.000

**LUMINANCE DATA IN FOOTLAMBERTS**

ANGLE	AVERAGE	AVERAGE
0-DEG	1536	1536
45	1153	1274
55	785	832
65	556	575
75	543	527
85	271	353

THIS REPORT IS BASED ON PUBLISHED INDUSTRY PROCEDURES • FIELD PERFORMANCE MAY DIFFER FROM LABORATORY PERFORMANCE

## MODEL NO. PNB2SFAVA2U6120SO

**coefficients of utilization — zonal cavity method**

	RF	20			50			80		
	RC	80			50			30		
	RW	70	50	30	50	30	10	50	30	10
room cavity ratio	1	64	61	59	58	56	55	56	54	53
	2	59	55	52	52	50	48	50	48	46
	3	55	50	46	47	44	42	46	43	41
	4	51	45	40	43	39	36	41	38	36
room cavity ratio	5	47	40	36	38	35	32	37	34	32
	6	43	36	32	35	31	28	34	31	28
	7	40	33	28	32	28	25	31	27	25
	8	37	30	25	29	25	22	28	24	22
	9	34	27	22	26	22	19	25	22	19
	10	32	24	20	23	20	17	23	19	17

**visual comfort probability**

room size	ceiling height	ceiling height			
		8.5	10.0	13.0	16.0
W	L	8.5	10.0	13.0	16.0
20	20	67	71	77	82
20	30	61	64	70	74
20	40	59	61	65	68
20	60	58	60	61	63
30	20	67	72	77	80
30	30	61	64	69	72
30	40	58	60	63	66
30	60	57	58	59	61
30	80	57	58	57	59
40	20	69	73	77	80
40	30	62	65	69	72
40	40	58	60	63	66
40	60	57	58	58	60
40	80	57	57	56	58
40	100	59	58	56	57
60	30	63	66	69	72
60	40	60	61	63	66
60	60	58	58	57	60
60	80	58	57	55	57
60	100	59	57	55	56
100	40	63	64	65	68
100	60	61	61	59	61
100	80	61	59	56	58
100	100	61	59	55	56

## ORDERING INFORMATION

Explanation of Catalog Number. Example: PNB2SFAVA2U6120SO

<b>PN</b>	<b>B</b>	<b>2</b>	<b>S</b>							
<b>PRISMALYTE:</b> Lens Frame Surface Fluorescent	<b>BODY STYLE:</b> Surface Box	<b>FIXTURE WIDTH</b>	<b>CEILING TYPE:</b> S=Surface	<b>LENS FRAME:</b> FA= Flush full-size aluminum frame RA= Regressed full-size aluminum frame RF= 1/2" regressed floating aluminum frame	<b>LENS/SHIELDING TYPE:</b> VA= Virgin acrylic (standard) See specifications and consult factory	<b>LAMP QUANTITY:</b> 2 or 3 Lamps	<b>LAMP/ FIXTURE LENGTH:</b> (Nominal 24") U4= 6" U T12 or U1.6 T8 or T15 U6= 6" U T8 (Magnetic T8 or Electronic T8 Ballast Only)	<b>VOLTAGE:</b> 120 or 277	<b>BALLAST TYPE:</b> LE= Magnetic (T12) OC= Magnetic (T8) SS= Electronic (T12) S3= 1-3 Lamp Electronic (T12) S0= Electronic (T8) O3= 1-3 Lamp Electronic (T8) DIM= Dimming (T12) PS= LOL Power Spec T8 Dimming Ballast PB= LOL Power Spec T15 Dimming Ballast	<b>OPTIONS:</b> Add appropriate suffix to catalog no., ie: (GLR)

\*With 7/16" black reveal four sides.

**OPTIONS/ACCESSORIES**

**FUSING:** Internal fast-flow fusing, SUFFIX: GLR  
 Internal slow-blow fusing, SUFFIX: GMF.

**RADIO INTERFERENCE FILTER:** 120 or 277 volt, 50 or 60 Hz.  
 One per fixture is standard, SUFFIX: RF.

**ELECTRICAL/WIRING OPTIONS:** Consult factory.

**LOW DENSITY CEILINGS:** SUFFIX: DSM.

**STEM AND CANOPY SETS:** Suspends fixture 6", 12", 18" or 24" from surface (four per fixture is required).

**CATALOG NUMBER:** ASC6 CSP (6"), ASC12 CSP (12"), ASC18 CSP (18"), ASC24 CSP (24").

## SPECIFICATIONS:

**PERFORMANCE:** In an installation of 2 lamp 31W luminaires in a room cavity ratio of 1, reflectance 80% ceiling, 50% wall, 20% floor, the C.U. shall not be less than .61. To prevent glare the VCP shall not be less than 57 either lengthwise or crosswise (at 100 fc level) and the average brightness at 65° shall not exceed 575 footlamberts. To control veiling reflections, luminaire output in the 30°-90° zone shall be not less than 65.5%.

**MATERIALS:** Chassis parts are die-formed 20 gauge cold rolled steel, welded for rigidity. **Lens Frame**—(FA) flush full-size aluminum frame, (RA) regressed full-size aluminum frame, (RF) 1/2" regressed floating aluminum frame with 7/16" black reveal, four sides.

**FINISH:** Chassis exterior—white baked acrylic enamel. **Cavity**—white baked acrylic enamel minimum reflectance 86%. Phosphate undercoating. **Lens**—extruded virgin acrylic, 3/16" square based female cones, running 45° to the panel edge, .095" nominal thickness (similar to pattern 12).

**ELECTRICAL:** Thermally protected class "P" ballast C.B.M. approved, non PCB. If K.O. is within 3' of ballast, use wire suitable for at least 90°.

**LABELS:** I.B.E.W. Listed by Underwriters Laboratories.

We reserve the right to change design, materials and finish in any way that will not alter installed appearance or reduce function and performance.



TECHNICAL INFORMATION • (978) 657-7600  
 631 AIRPORT ROAD, FALL RIVER, MA 02720 • (508) 679-8131  
 C.F.I. DIVISION OF CANLYTE, INC.  
 525 EDUCATION ROAD, CORNWALL, ONTARIO  
 CANADA K6H 6C7 • (613) 938-6221