

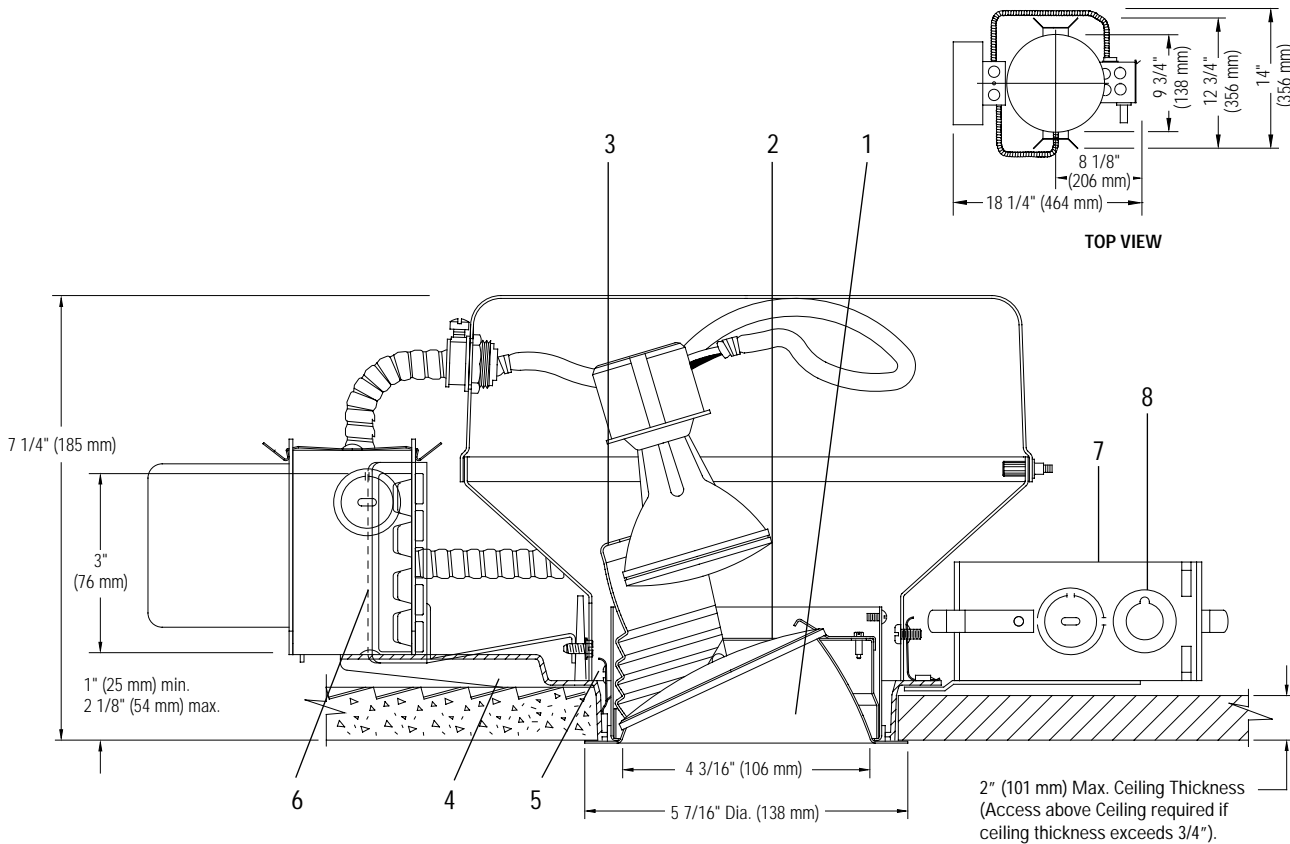
**4 1/2" Aperture
Lens Wall Washer
PAR20 Metal Halide**

**Calculite®
H.I.D.
Lensed Wall Washer**

LW4P
01/01

TYPE:

5.1.1



Ceiling Cutout: 5 1/16" (129 mm) Dia.

COMPLETE FIXTURE CONSISTS OF REFLECTOR TRIM & FRAME-IN KIT. Select each separately.

Reflector Trim		Frame-In Kit	Lamp
<input type="checkbox"/> LW4P CLW	Specular Clear, White Self-Flange	<input type="checkbox"/> AA4P 35HD	39W PAR20 (Flood) Metal Halide
<input type="checkbox"/> LW4P CLP	Specular Clear, Polished Self-Flange		
<input type="checkbox"/> LW4P BKW	Specular Black, White Self-Flange		

FEATURES

- Aperture Cone:** Specular Alzak® clear or black aluminum (with U.V. resistant, non-fading finish), 16 ga. Painted white or polished flange. For other finishes, consult factory.
- Spread Lens:** Heat resistant glass, held in position by spring clip.
- Wall Washer Reflector:** Anodized aluminum, 18ga. Designed to efficiently redirect light toward the wall.
- Mounting Ring:** Rust resistant die-cast aluminum. Designed for vertical adjustment from inside the fixture.
- Retaining Springs:** Rust resistant springs simplify reflector/housing removal for inspection and maintenance.
- Mounting Brackets:** 16 ga. steel. Use with standard 3/4" or 1 1/2" lathing channels (by others) or optional Lightolier mounting bars (1950 or 1951).
- Junction Box:** 14 ga. steel. Can be inspected from below. UL listed for through branch circuit wiring with maximum of 8 (no. 12) AWG, 75° C conductors or 60° C conductors for end of run.
- Thermal Protector:** Meets NEC and UL requirements. Thermal insulation shall not be installed within 3" (76mm) of the recessed fixture enclosure, wiring compartment, or ballast, and shall not be so installed above the fixture so as to entrap heat and prevent the free circulation of air.

ELECTRICAL

Ballast: Dual tap 120/277V, thermally protected, lag type high reactance autotransformer, H.P.F. Medium base pulse rated porcelain socket with nickel plated screw shell; prewired with #18 ga. SF-2 leads.

Ballast	ANSI Code	Voltage	Max. Amps	Input Watts
39W MH	M130	120/277	0.90/0.40	56

OPTIONS AND ACCESSORIES

- Mounting Bars:** 1950 - 18" Set of (2) 1951 - 27" set of (2)
- T-Bar Anchor Clips:** 1956 (set of 4). For use with mounting bars.
- Fuse:** Add suffix F1 or F2 to Frame-In Kit (F1=120V, F2=277V)
- Chicago Air Plenum:** Consult Factory
- Electronic Ballast:** Consult Factory EB1=120V EB2=277V

LABELS

UL (Suitable for Damp Locations); C. S. A.; I. B. E. W.

LIGHTOLIER®

We reserve the right to change details of design, materials, and finish. Alzak® is a registered trademark of The Aluminum Co. of America.

LIGHTOLIER a GENLYTE THOMAS company.
631 Airport Road, Fall River, MA 02720
(508) 679-8131 • FAX (508) 674-4710

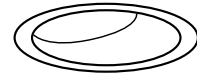
Copyright 2001

LW4P

01/01

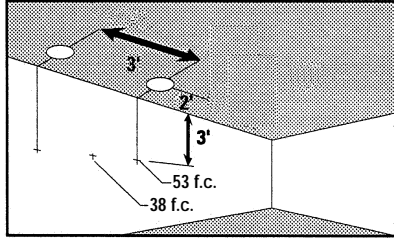
Calculite®
H.I.D.
Lensed Wall Washer

4 1/2" Aperture
Lens Wall Washer
PAR20 Metal Halide



TYPE:

5.1.1



LIGHTING DATA

EXAMPLE: With multiple 39W PAR20 FL (M.H.) units located 2' from wall and 3' on center, the illumination on the wall 3' down from the ceiling is 53 f.c. beneath and 38 f.c. between fixtures.

FOOTCANDLES ON WALL FROM MULTIPLE UNITS – 39W PAR20 FL METAL HALIDE (MASTERCOLOR BY PHILIPS)

DISTANCE FROM CEILING, FT.	UNITS 2 FEET FROM WALL						UNITS 3 FEET FROM WALL					
	— 2' —			— 3' —			— 3' —			— 4' —		
1	30	25	30	25	13	25	8	7	8	7	5	7
2	65	58	65	54	30	54	20	17	20	17	11	17
3	69	65	69	53	38	53	30	26	30	25	17	25
4	56	55	56	40	34	40	32	30	32	27	20	27
5	42	42	42	29	27	30	30	29	30	24	20	24
6	31	31	31	22	21	22	26	25	26	20	18	20
7	24	24	24	17	16	17	21	21	21	17	16	17
8	18	19	18	13	13	13	18	18	18	14	14	14
9	15	15	15	11	11	11	15	15	15	12	12	12

Footcandle values are averaged and rounded off and are based on a minimum of five units. For fixture-to-wall distances, other than shown, use maximum of 1 of 1 spacing (distance between fixtures not more than distance to wall) for best results.

LIGHTOLIER®