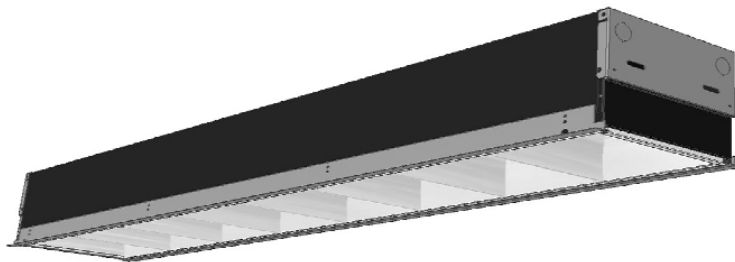


Lytecel Recessed Fluorescent **LIS8G8LL**

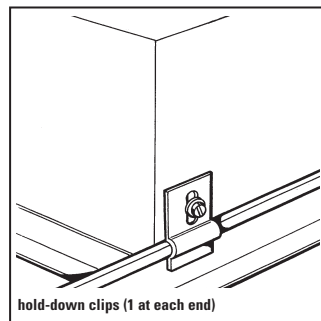
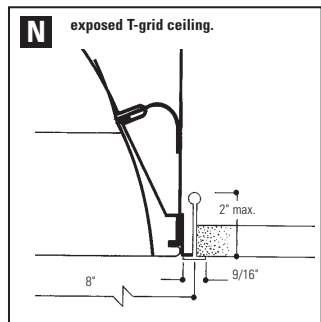
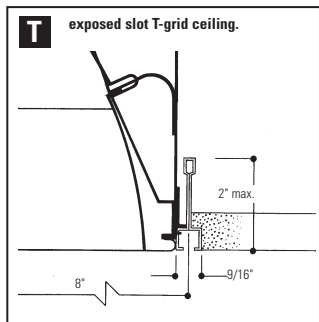
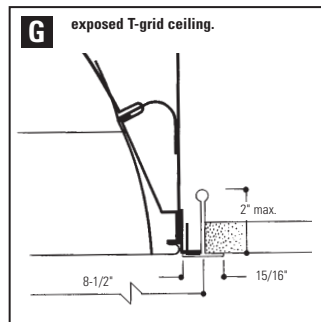
8" X 48", 8 Cell (1 Row) Parabolic Louver,
Static, 1 or 2 Lamp T8, IES RP1 For VDT Areas

Features

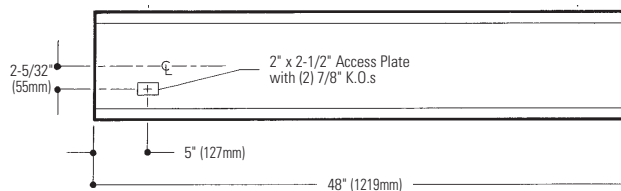
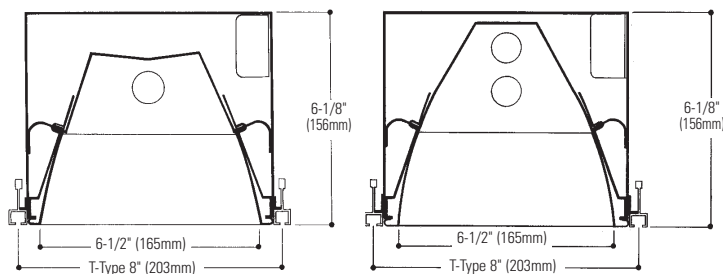
- 67.3% efficient (1 lamp).
- 61.3% efficient (2 lamp).
- 1.7 spacing mounting ratio (1 lamp).
- 1.4 spacing mounting ratio (2 lamp).
- Semi-specular, low iridescence, pre-anodized aluminum louver.
- Vertical grain on cross blades eliminates reflected lamp image.
- Spring loaded latches (self centering).
- Reversible louver hinging.
- Louver has protective dust guard.
- Only 6-1/8" deep body.
- Black housing exterior for cooler ballast operating temperature.
- Turned-in edges for safe handling.
- UL-Listed twin knockout access plate.
- Construction to meet NYC Code or Chicago Plenum is available.
- Optional DALI ballast accepts digital dimming commands from computers, scene controllers and automatic control devices.



Mounting Methods



Dimensions



Job Information

Type:

Job Name:

Cat. No.:

Lamp(s):

Volts/Ballast:

Lightolier a Genlyte company www.lightolier.com
 Technical Information: (978) 657-7600 • Fax (978) 658-0595
 631 Airport Road, Fall River, MA 02720 • (508) 679-8131 • Fax (508) 674-4710
 We reserve the right to change details of design, materials and finish.
 © 2005 a Genlyte company **Section 2/Folio G07-14**



Lytecel Recessed Fluorescent LIS8G8LL

Page 2 of 2

8" x 48" wide, 8 Cell (1 Row) Parabolic Louver, Static, 1or 2 Lamp T8, IES RP1 For VDT Areas

Model No. LIS8G8LL132120S0

LER = FP - 58.6 IW - 30 BF - 0.92
 Comparative yearly lighting energy cost per 1000 lumens = \$4.10
 Report Number: G2005197
 Catalog Number: LIS8G8LL132120S0
 Lamp: F32/T8 TL841
 Luminaire: LIS 8" x 48" with 1 light reflector and 8 cell low iridescence semi-specular louver.
 Ballast: Triad B1321120
 Report is based on 2850 Lumens per lamp.
 Efficiency: 67.3%
 CIE Type-Direct-Indirect
 Plane: 0-Deg 90-Deg
 Spacing Criteria: 1.2 1.7
 Shielding Angles: 90 90
 Plane: 0-Deg 90-Deg
 Luminous Length: 45.960 6.480

CANDELA DISTRIBUTION

	0.0	45.0	90.0	FLUX
0	685	685	685	
5	683	700	721	68
15	656	804	931	228
25	598	910	1134	411
35	512	948	993	525
45	381	652	515	432
55	228	254	65	207
65	25	35	20	38
75	7	7	6	8
85	2	2	1	2
90	0	0	0	

Model No. LIS8G8LL232120S0

LER = FP - 49.6 IW - 61 BF - 0.87
 Comparative yearly lighting energy cost per 1000 lumens = \$4.87
 Report Number: G2005193
 Catalog Number: LIS8G8LL232120S0
 Lamps: F32/T8TL841
 Luminaire: LIS 8" X 48" with 2 light reflector and 8 cell low iridescence, semi-specular louver.
 Ballast: TRIAD B132120
 Report is based on 2850 Lumens per lamp.
 Efficiency: 61.3%
 CIE Type-Direct-Indirect
 Plane: 0-Deg 90-Deg
 Spacing Criteria: 1.2 1.4
 Shielding Angles: 90 90
 Plane: 0-Deg 90-Deg
 Luminous Length: 45.960 6.480

CANDELA DISTRIBUTION

	0.0	45.0	90.0	FLUX
0	1641	1641	1641	
5	1622	1726	1744	165
15	1542	1874	2012	517
25	1382	1833	2099	819
35	1156	1665	1563	943
45	884	1001	629	684
55	497	319	80	294
65	50	48	22	58
75	14	9	6	11
85	4	3	2	3
90	0	0	0	

COEFFICIENTS OF UTILIZATION - ZONAL CAVITY METHOD. EFFECTIVE FLOOR CAVITY REFLECTANCE 0.20

RC	70	80	30	50	30	50	30	10
1	75	73	71	69	67	66	66	65
2	70	66	62	62	60	57	60	58
3	65	69	55	56	53	50	55	52
4	60	54	49	51	47	44	50	46
5	56	49	43	47	42	39	45	42
6	52	44	39	42	38	35	41	37
7	48	40	35	39	34	31	38	34
8	45	37	32	36	31	28	35	31
9	42	34	29	33	28	25	32	28
10	39	31	26	30	26	23	30	26

COEFFICIENTS OF UTILIZATION - ZONAL CAVITY METHOD. EFFECTIVE FLOOR CAVITY REFLECTANCE 0.20

RC	70	80	30	50	30	50	30	10
1	69	67	65	63	61	60	60	59
2	64	61	57	57	55	53	56	54
3	60	55	51	52	49	47	51	48
4	56	50	46	48	44	42	47	44
5	52	46	41	44	40	37	43	39
6	49	42	37	40	36	34	39	36
7	45	38	34	37	33	30	36	33
8	42	35	31	34	30	28	33	30
9	40	33	28	32	28	25	31	28
10	37	30	26	29	26	23	29	25

LUMINANCE DATA IN CANDELA/SQ. METER

AVERAGE IN DEG.	AVERAGE 0-DEG.	AVERAGE 45-DEG.	AVERAGE 90-DEG.
45	2803.	4794.	3789.
55	2068.	2304.	590.
65	308.	431.	246.
75	141.	141.	121.
85	119.	119.	60.

ZONAL LUMEN SUMMARY

ZONE	LUMENS	% LAMP	% FIXT
0-30	706	24.8	36.8
0-40	1232	43.2	64.2
0-60	1870	65.6	97.5
0-90	1918	67.3	100.0
90-180	0	0.0	0.0
0-180	1918	67.3	100.0

LUMINANCE DATA IN CANDELA/SQ. METER

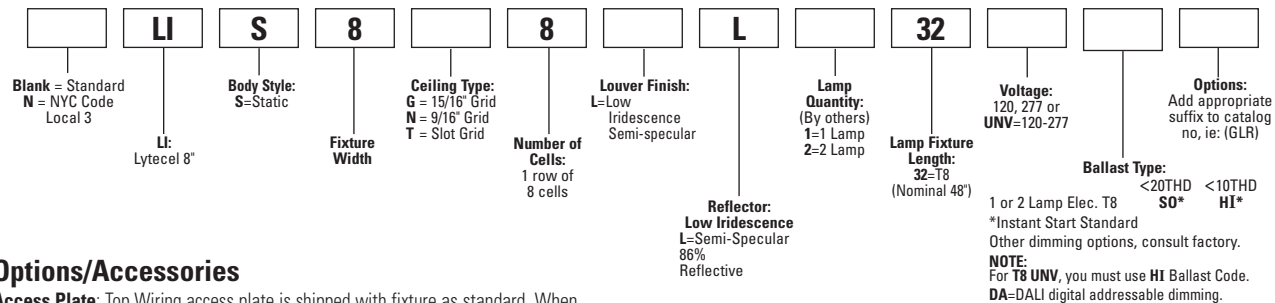
AVERAGE IN DEG.	AVERAGE 0-DEG.	AVERAGE 45-DEG.	AVERAGE 90-DEG.
45	6504.	7365.	4628.
55	4508.	2893.	726.
65	616.	591.	271.
75	281.	181.	121.
85	239.	179.	119.

ZONAL LUMEN SUMMARY

ZONE	LUMENS	% LAMP	% FIXT
0-30	1520	26.3	43.0
0-40	2445	42.9	69.9
0-60	3423	60.1	97.9
0-90	3496	61.3	100.0
90-180	0	0.0	0.0
0-180	3496	61.3	100.0

Ordering Information

Explanation of Catalog Number. Example: LCS8G12PR132120S0GLR



Options/Accessories

Access Plate: Top Wiring access plate is shipped with fixture as standard. When access plates are required in advance for wiring convenience, specify separately.

Order Catalog Number: **ACP5 CSP.**

Electrical/Wiring Options: Consult factory.

Fusing: Internal fast-blow fusing. Suffix: **GLR.**
Internal slow-blow fusing. Suffix: **GMF.**

Chicago Plenum: Suffix: **CP.**

Specifications

Performance: In an installation of 1 lamp 32W luminaires in a room cavity ratio of 1, reflectance 80% ceiling, 50% wall, 20% floor, the C.U. shall not be less than .73 with a spacing to mounting ratio of 1.7 perpendicular to the lamps. To meet IES RP-1 for VDT areas the VCP (visual comfort probability) shall not be less than 93 either crosswise or lengthwise and the candela value between 55° and 90° in the 0° to 90° planes shall not exceed 2304. Candelas at Nadir (0°) not to exceed 685.

Materials: Chassis parts are die-formed cold rolled steel. **Housing** is with all edges trued-in for safe handling.

Louvers: Pre-anodized aluminum (Coilzak® or equal).

Specifications (continued)

Finish: Louver—specular low iridescence pre-anodized reflector sheet.

Reflector: Low iridescence semi-specular reflector sheet, 86% reflective.

Chassis exterior—black baked polyester enamel.

Electrical: Thermally protected class "P" ballast C.B.M. approved, non PCB. If K.O. is within 3" of ballast, use wire suitable for at least 90°.

Labels: I.B.E.W./UL and ULc Listed.

Job Information

Type:

Lightolier a Genlyte company www.lightolier.com
 Technical Information: (978) 657-7600 • Fax (978) 658-0595
 631 Airport Road, Fall River, MA 02720 • (508) 679-8131 • Fax (508) 674-4710
 We reserve the right to change details of design, materials and finish.
 © 2005 a Genlyte company **Section 2/Folio G07-14**

LIGHTOLIER®