

DLIGHT III MAPVIEW

Master Control Graphical User Interface

DLight III MapView allows full control and programming of all devices connected to a DyNet network. An optional client to DLIII Server, MapView provides the end user with a front-end interface that enables control from single or multiple points, and with different security settings.

MapView interfaces with the operator visually via a GUI (Graphical User Interface), for both commissioning and end-user control. A pictorial representation of the controlled space is broken up into areas and channels, to provide a strong and intuitive visual link between the control system and the controlled space.

MapView is optimized to program a vast array of control settings including; enumerating DALI controlled light fixtures, defining lighting zone areas, placement of Philips-controlled specified loads (such lighting, fans, pumps, AV or HVAC equipment) and tasking of network devices to perform conditional functions. MapView also features an energy management reporting capability in relation to lighting consumption, via notional load profiling and actual power monitoring of lighting load consumption, via third party Modbus metering.

MapView delivers granular site-wide visibility, access and control, enabling building owners to easily customize and expand lighting control systems as they evolve overtime.

Technical Data



LAN Interface

Ethernet - TCP/IP

Server Software Interfaces

DCOM

DyNet Interface

1 serial interface, via USB or RS232 port or using Ethernet for up to 100 DNG100BT-NAs

Hardware Requirements *

Hardware Platform: PC
Processor: Minimum 2Ghz Dual Core
Hard Disk: Minimum 10Gb free space
System Memory: Minimum 2GB RAM
Graphics Memory: Minimum 256MB RAM
Network: Ethernet Network card

We recommend the PC be powered from an Uninterruptable Power Supply

* Note: minimum requirements will vary depending on the size of the site and the number of simultaneously connected clients. Consult the DLight III Server Implementation Guide for more details.

Supported Operating Systems

Vista Business SPI
Vista Ultimate SPI
Windows 2000 Server SP4
Windows 2003 Server SP2
Windows XP Professional SP2 & SP3
Windows 7 Professional
Windows 7 Ultimate

Additional Prerequisites

Microsoft.NET Framework 2.0 (included with DLight III installer)
Windows Installer 3.1
Internet Explorer 6

Recommended Accompanying Software

Microsoft SQL Management Studio Express

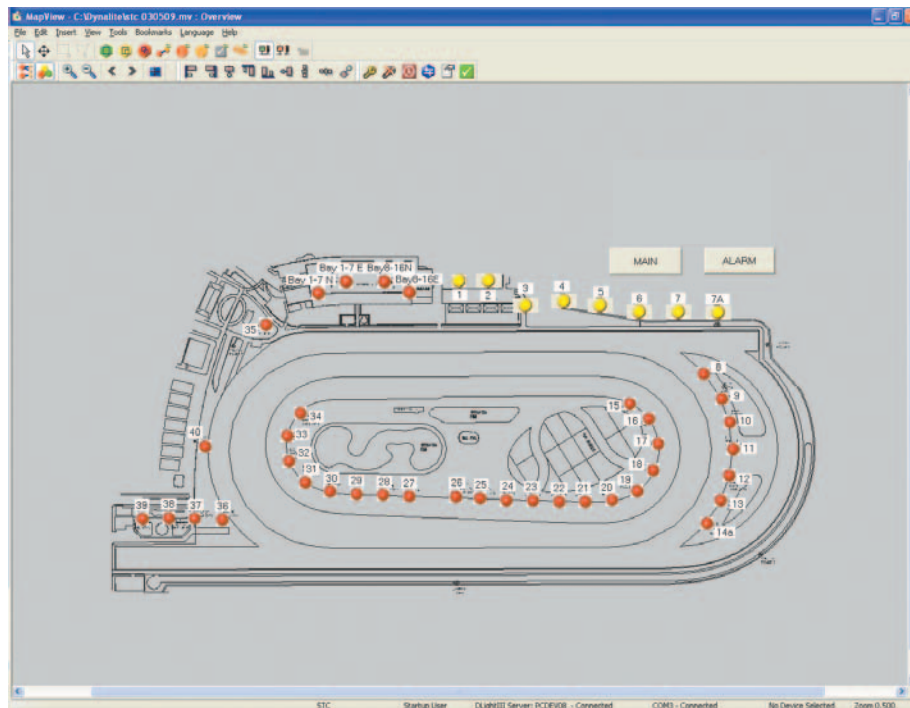
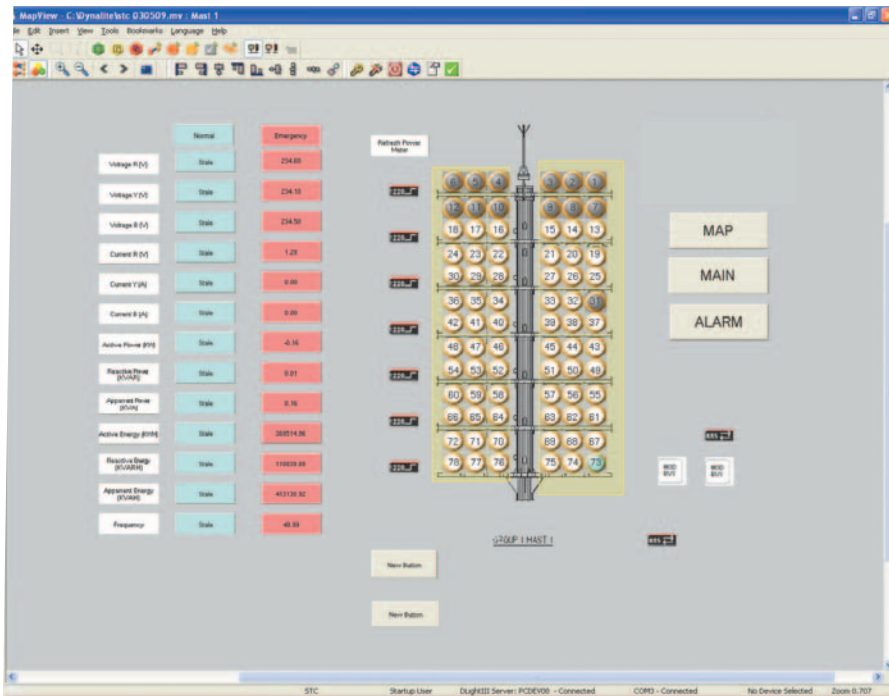
Client Security

Integrates with and uses Windows Domain Security Groups and Users.
Rights configurable on a User and Group basis.

DLIGHT III MAPVIEW

Master Control Graphical User Interface

Sample Screens



e: controls.support@philips.com
t: 1-800-526-2731
w: lightolier.com

For further information contact:

