

# DLIGHT III SERVER

## Gateway Integration Software

DLight III Server is designed to provide high level integration and control options to a Philips DyNet network via a Local Area Network. The DyNet network is connected to a server PC using either a COM port (via DNG232-NA), a USB port (via a DMNG-USB-NA) or over an Ethernet network using TCP/IP (via a DNG100BT-NA). Information can then be exchanged via client software running on the server PC or clients connecting remotely over the Ethernet network. Integration to other services is made simple via the use of a set of calls for a DCOM interface.

DLight III Server is a solution for providing occupants of open plan office space with control over their local environment. TrayPan client software that is provided with DLight III Server, can reside in the system tray of desktop PCs in the open plan office and use the existing LAN to communicate with DLight III Server, providing a cost benefit over the provision of local control wall panels that would otherwise be required. A web page with an ActiveX control is another option of client control.

As well as control and status reflection of the lighting system, alarm events such circuit breaker trip and lamp failure can be automatically forwarded to the BMS. Diagnostic and maintenance data such as lamp burn time is readily available.

The DLight III Server license model takes the size and scope of the control system into account, making the product affordable for both large and small sized projects.

### Technical Data



#### LAN Interface

Ethernet - TCP/IP

#### Server Software Interfaces

DCOM

#### DyNet Interface

1 serial interface, via USB or RS232 port or using Ethernet for up to 100 DNG100BT-NA's

#### Hardware Requirements \*

Hardware Platform: PC  
Processor: Minimum 2Ghz Dual Core  
Hard Disk: Minimum 10Gb free space  
System Memory: Minimum 2GB RAM  
Graphics Memory: Minimum 256MB RAM  
Serial Ports: One free RS232 or USB port  
Network: Ethernet Network card  
1 x Philips PC Node adaptor

We recommend the PC be powered from an Uninterruptable Power Supply

\* Note: minimum requirements will vary depending on the size of the site and the number of simultaneously connected clients. Consult the DLight III Server Implementation Guide for more details.

#### Supported Operating Systems

Vista Business SPI  
Vista Ultimate SPI  
Windows 2003 Server SP2  
Windows XP Professional SP3  
Windows 7 Professional  
Windows 7 Ultimate

#### Clients Included

TrayPan client

#### Optional Clients

DLight III MapView - Master Control GUI  
Webpage client

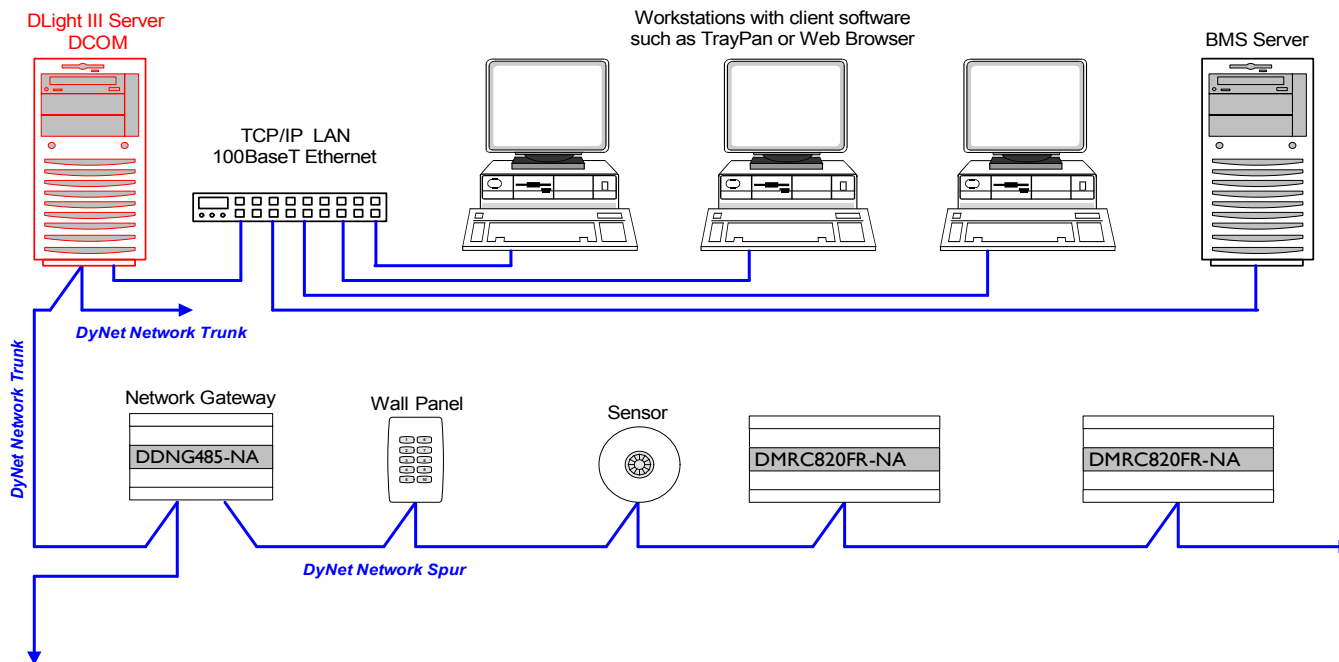
#### Client Security

Integrates with and uses Windows Domain Security Groups and Users.  
Rights configurable on a User and Group basis.

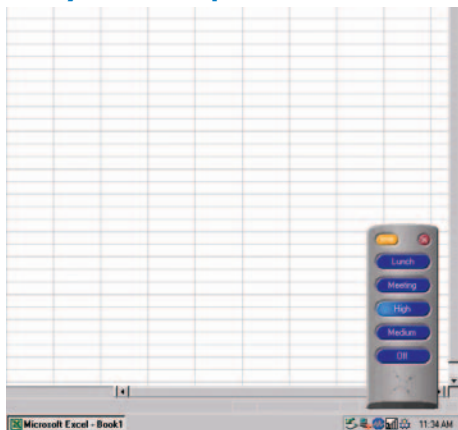
# DLIGHT III SERVER

## Gateway Integration Software

### Typical Application



### TrayPan Operation



### Ordering Information

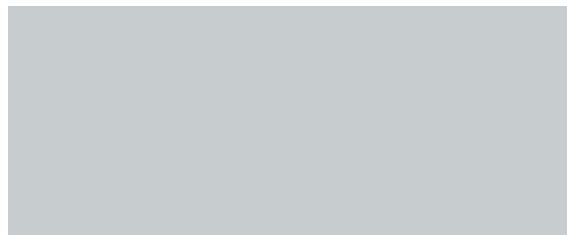
Type	Description	Quantity
DL3SBL	Server with 10 Device/Area* Licenses	1
DL3SUL	Additional Device/Area* License	

\* required licenses based on qty of hardware devices or areas



e: [controls.support@philips.com](mailto:controls.support@philips.com)  
t: 1-800-573-1659  
w: [lightolier.com](http://lightolier.com)

For further information contact:



DLIGHTIII SERVER-NA Rev I February 12, 2010

Specifications are preliminary and subject to change prior to commercial release. Regulatory compliance pending. © Philips Dynalite. Unit 6, 691 Gardiners Road Mascot 2020 Australia. ABN 97 095 929 829. All rights reserved. Dynalite, DyNet and associated logos are the registered trademarks of Philips Dynalite. Not to be reproduced without permission.