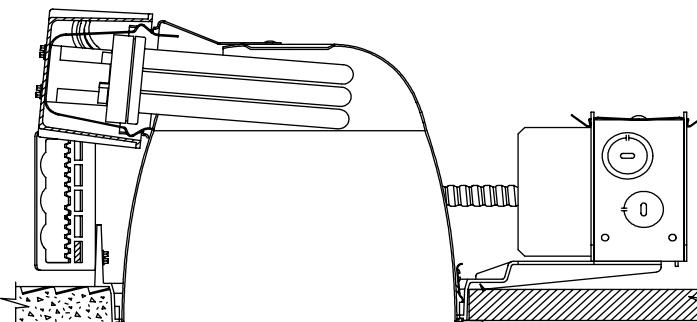


8037CL/7142BCU



Frame-In Kit			Reflector Trim Series									
Apert. Dia	Lamp	Cat. No.	Vert. Down-light	Vert. Wall Washer	Horiz. Down 55°	Horiz. Down 50°	Horiz. Wall Washer	Lens Wash.	Lens Down-light	Cross Baffle Down.	Cross Blade Down.	Turbo Baffle Down.
<b>Triple Tube</b>												
6"	1-26/32W	<b>6132BCU</b>	8021	8021WW	8031	-	8081	8046	8091	-	8091CB	-
7 3/8"	1-26/32W	<b>7132BCU</b>	8022	8022WW	8037	-	8087	8047	8097	-	8097CB	8037TB
	1-42W	<b>7142BCU</b>	8022	8022WW	8037	-	8087	8047	8097	-	8097CB	8037TB
8 3/4"	1-42W	<b>8142VCU</b>	8023	-	-	-	-	-	-	-	-	-
	2 2/26/32/42W	<b>8242HCU</b>	-	-	8038	8039	8089	-	-	8069	-	8038TB
<b>Quad Tube</b>												
6"	2-13W	<b>6213HDU</b>	-	-	8052	-	8082	-	-	-	-	-
	2-18W	<b>6218HDU</b>	-	-	8051	-	8084	-	-	-	-	-
7 3/8"	2-18W	<b>7218HDU</b>	-	-	8056	-	8096	8043	8096	-	8096CB	8056TB
	1-28W	<b>7216HDU</b>	-	-	8065	-	-	8044	-	-	-	8056TB
	2-26W	<b>7226HDU</b>	-	-	8056	-	8056	8044	8096	-	8096CB	8056TB
8 3/4"	2-26W	<b>8226LPDU</b>	-	-	-	-	-	-	-	8068	-	-
	2-26W	<b>8226LPDU</b>	-	-	-	-	-	-	-	8068	-	-

Cylinder Housing Kit			Reflector Trim Series									
<b>Triple Tube (Semi-Recessed)</b>												
8 3/4"	2-26/32/42W	<b>SR8242HCU</b>	-	-	8038	8039	-	-	-	8069	-	8038TB
<b>Quad Tube (Surface Mount)</b>												
8 3/4"	2-18W	<b>CS8218PDU</b>	-	-	-	-	-	-	-	8068	-	-
	2.26	<b>CS8226LPDU</b>	-	-	-	-	-	-	-	8068	-	-

Notes: 1. For more information on Frame-In Kits and Reflector Trims, see separate specification sheets.  
2. Consult factory for other surface (CS) and wall cylinders (CW8) for availability.

### 4-Pin Triple Tube Lamps

Lamp	General Electric	Sylvania	Philips
26W	F26TBX / * / A / 4P	CF26DT / E / IN / *	PL-T26W / * / 4P
32W	F32TBX / * / A / 4P	CF32DT / E / IN / *	PL-T32W / * / 4P
42W	F42TBX / * / A / 4P	CF42DT / E / IN / *	PL-T42W / * / 4P

\*Specify lamp color as desired.

### Options & Accessories

<b>Emergency Lighting</b>	Add suffix <b>EM</b> to Frame-In Kit.
<b>Chicago Plenum</b>	Add suffix <b>LC</b> to Frame-In Kit.
<b>Mounting Bars</b>	<b>1950</b> 18" set of (2) <b>1951</b> - 27" set of (2)
<b>T-bar Anchor Clips</b>	<b>1956</b> -set of (4) for use mounting bars above
<b>Wood Joist Mtg. Bars</b>	<b>7994</b> - Set of (2)
<b>Sloped Ceiling Adapter</b>	See spec. sheet SCA.

### 4-Pin Quad Tube Lamps

Lamp	General Electric	Sylvania	Philips
13W	F13DBX / * / 4P	CF130DD / E / *	PL-C13W / * / 4P
18W	F18DBX / * / 4P	CF180DD / E / *	PL-C18W / * / 4P
26W	F26DBX / * / 4P	CF260DD / E / *	PL-C26W / * / 4P

\*Specify lamp color as desired.

### Options & Accessories (Frame-In Kits Only)

<b>Ceiling Clips</b>	<b>7998</b> - Set of (2)
<b>Existing/Thk. Ceiling</b>	<b>FAEC6</b> (6"), <b>FAEC7</b> (7 3/8")

### Options & Accessories (Frame-In Kits Only) (continued)

**Fuse (Slow Blow)** Add suffix **F**  
**Decorative Attachments** See separate catalog for product information

### Three Year Warranty

The complete downlight, including PowerSpec® ballast, is covered by Lightolier's three-year limited warranty. For a copy, ask your Lightolier representative.

Mark VII® is a registered Trade Mark of Advance Transformer Company.

Job Information	Type:
<b>Job Name:</b>	
<b>Cat. No.:</b>	
<b>Lamp(s):</b>	
<b>Notes:</b>	

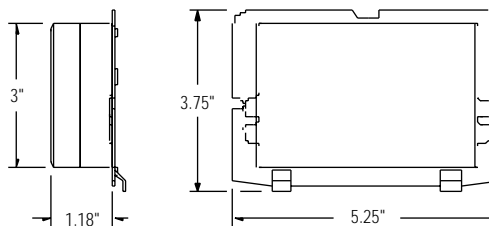
Lightolier a Genlyte Thomas Company [www.lightolier.com](http://www.lightolier.com)  
631 Airport Road, Fall River, MA 02720 • (508) 679-8131 • Fax (508) 674-4710  
We reserve the right to change details of design, materials and finish.  
© 2002 Genlyte Thomas Group LLC (Lightolier Division) • A0902



## Advance Mark VII® Ballast Specifications

**Input Voltage:** 120 through 277V AC, 50/60 Hz.  
**Dimming Range:** 100% to 5%; low dim varies with ambient and lamp temperature.  
**Starting Circuit:** Soft start to prolong lamp life; turns on the lamps at any intensity.  
**Ballast Factor (Full):** 98%  
**Power Factor (Full and Low Dim):** 98% (Quad Tube), 97% (Triple Tube)  
**Lamp CCF:** <1.6  
**THD (Full):** <10% at full on or <20% at low dim  
**Flicker:** <3%  
**End-Of-Life Detection:** Lamp Fault Interrupter circuitry (LF) shuts down after sensing lamp failure; Protects against improper EOL condition. Defaults to ON after proper lamping.  
**Open and Short Circuit Protection:** Yes  
**ANSI Operation:** Yes  
**FCC Part 18.5J:** Yes  
**Surge Test:** Yes  
**No PCBs Wiring:** 2-wire line voltage; 2-wire low voltage (0-10V) for dimming

**Sound Rating:** A  
**Minimum Starting Temperature:** 10°C (50°F)  
**UL & CSA Listed:** Yes, Class P and Type 1 Outdoor.



## Electrical Data (4-Pin T4 Triple Tube Lamps)

Triple Lamp	Lamp Base	Input Wattage		Line Current (Amp.)	
		120V	277V	120V	277V
1-26W	GX24q-3	29	29	0.25	0.12
1-32W	GX24q-3	35	35	0.32	0.14
1-42W	GX24q-4	50	45	0.41	0.18
1-26W†	GX24q-3	58	58	0.52	0.24
1-32W†	GX24q-3	70	70	0.64	0.28
1-42W†	GX24q-4	90	90	0.82	0.36

## Electrical Data (4-Pin T4 Quad Tube Lamps)

Quad Lamp	Lamp Base	Input Wattage		Line Current (Amp.)	
		120V	277V	120V	277V
1-26W	G24q-3	29	29	0.25	0.11
1-26W†	GX24q-3	58	58	0.52	0.24
1-32W†	GX24q-3	70	70	0.64	0.28
1-42W†	GX24q-4	90	90	0.82	0.36

## Compatible Lightolier Dimming Control

Product	Catalog**	Voltage	Wattage
MultiSet Pro (digital preset)	MSP600HDF120	120V	600VA
	MHP600HDF120	120V	600VA
	MHP1500HDF120	120/277V	1500VA
	All VA Models*	120V	
Onset (digital preset)	OS600HDF120	120V	600VA
	OH600HDF120	120V	600VA
	OH1500HDF120	120V	1500VA
	All VA Models*	120V	
Sunrise (slider preset)	ZP600HDF120	120V	600VA
	All VA Models*	120V	
Momentum Preset	MP1500HDF120	120V	1500VA
	All VA Models*	120V	
Vega (slider)	V2000HDFU	120/277V	2000VA
Rockside (slider preset)	All VA Models*	120V	various
Precision Rotary	All VA Models*	120V	various
Insight Occupancy Sensor	All VA Models*	120V	various

Product	Catalog**	Voltage	Wattage
Lytemode	LM22400HDF	120V	(2) 2400 VA
	LM22400HDF32	120V	(2) 2400 VA
	LM24000HDF	277V	(2) 2400 VA
	LMDP20HDF120	120V	20 Amp
	LMDP20HDF277	277V	20 Amp
Dimming Amplifiers	DA10HDFI	120/277V	10 Amp at 120/2
Use with VA Models	DA20HDF271	120V	20 Amp
	DA20HDF277I	120V	20 Amp

\*Use with DA10HDFI, DA20HDF120I or DA20HDF277I

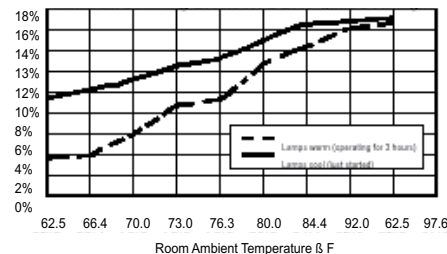
\*\*Specify color suffix. See Lightolier Control Catalog for additional information.

For Technical/Sales Assistance, please contact Lightolier Control at 800-526-2731; or website at [www.lolcontrol.com](http://www.lolcontrol.com). For luminaires, visit [www.lightolier.com](http://www.lightolier.com).

## Dimming Performance

Advance Mark VII® dimming is available with Calculite compact fluorescent. Advance Mark VII® will start from any preset dimmed level and can be controlled from a variety of Lightolier controls.

Temperature, both of the lamp and the environment significantly affects the dimmed performance of compact fluorescent lamps. Warm lamps (those operating for several hours in a warm room) will be brighter at low dim than cold lamps (those just started in an empty air conditioned space). In some cases, the practical dimming range may not reach to low dim. Lamp color also shifts as the lamps dim (opposite of the warming that occurs when dimming incandescent). New lamps must be seasoned at full light output of 100 hours before dimming.



<b>Job Information</b>	<b>Type:</b>
------------------------	--------------

Lightolier a Genlyte Thomas Company [www.lightolier.com](http://www.lightolier.com)  
 631 Airport Road, Fall River, MA 02720 • (508) 679-8131 • Fax (508) 674-4710  
 We reserve the right to change details of design, materials and finish.  
 © 2002 Genlyte Thomas Group LLC (Lightolier Division) • A0902

**LIGHTOLIER®**