



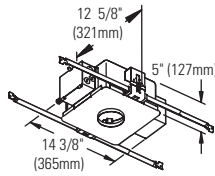
Calculite® Evolution Lensed Wall Washer **C3MRL**

Page 1 of 2

3" Aperture, MR16 (12V)

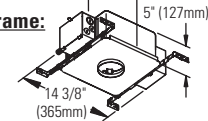
Non-IC Frame:

- C3LV
- C3LVE1
- C3LVE2



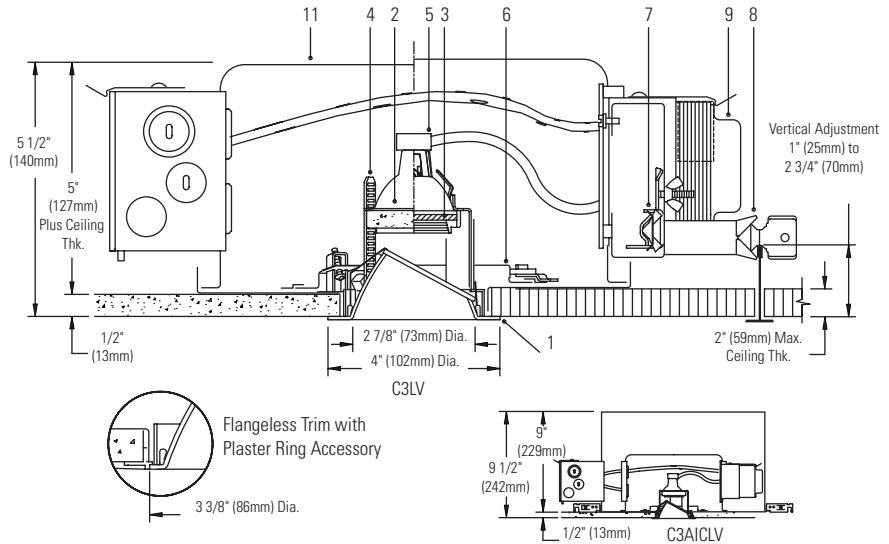
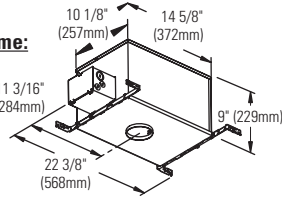
Non-IC AirSeal Frame:

- C3ALV
- C3ALVE1
- C3ALVE2



IC AirSeal Frame:

- C3AICLV
- C3ALCLVE1



Ceiling Cutout: 3 1/2" (130mm) Dia.

For Complete Fixture Order: Trim Kit + Frame-In Kit. Each Sold Separately.

Trim Kit				Frame-In Kit			Lamp*
Cone Finish	White Flange	Polished Flange	Flangeless	C3LV	Non-IC	Magnetic 120/277V	42W-65W MR16 (12V)
Clear	C3MRL CLW	C3MRL CLP	C3MRL CLFT	C3LVE1	Non-IC	Electronic 120V	20W-65W MR16 (12V)
Comfort Clear Diffuse	C3MRL CCDW	C3MRL CCDP	C3MRL CCDFT	C3LVE2	Non-IC	Electronic 277V	20W-65W MR16 (12V)
Champagne Bronze	C3MRL CCZW	C3MRL CCZP	C3MRL CCZFT	C3ALV	Non-IC AirSeal®	Magnetic 120/277V	42W-65W MR16 (12V)
Gold	C3MRL GDW	C3MRL GDP	C3MRL GDF	C3ALVE1	Non-IC AirSeal®	Electronic 120V	20W-65W MR16 (12V)
Matte White	C3MRL WHW	NA	C3MRL WHFT	C3ALVE2	Non-IC AirSeal®	Electronic 277V	20W-65W MR16 (12V)
Specular Black	C3MRL BKW	C3MRL BKP	C3MRL BKFT	C3AICLV	IC AirSeal®	Magnetic 120	20W-50W MR16 (12V)
				C3AICLVE1	IC AirSeal®	Electronic 120V	20W-50W MR16 (12V)

Note: Magnetic not recommended for residential or noise sensitive areas.

Features

- Trim Kit:** Low brightness aperture cone; 0.040" aluminum, anodized; 50° visual cut-off to lamp and lamp image. Cone keyed to kick reflector with direction spread lens distribute light smoothly for vertical surface wall washing. Captive lens during relamping. Hinged, and snaps on for easy tool-less installation. Self-flange in painted white or aperture matching polished flange. Flangeless trim used with Plaster Trim Ring accessory. Interchangeable with other 3" Evolution trims.
- Lamp Support:** Die-form aluminum with knurled surface for easy gripping during relamping. Spring tension clips hold lamp and lens and allow fast snap-in, snap-out relamping. Matte black finish. Accepts up to two 1" diameter accessories.
- Cover Glass:** High temperature, soft focus lens.
- Thick Ceiling Ready Brackets:** Die-form steel, matte black finish. Adjust trim kit vertically to accommodate up to 2" thick ceiling, lockable.
- Lampholder:** Procelain bi-pin socket. Pre-wired with No.18 AWG Teflon leads.
- Horizontal Adjustment Mechanism:** Built-in ready for adjustable trim, matte black finish.
- Frame Vertical Adjustment Mechanism (C3LV):** Accommodates mounting to virtually any ceiling system using pre-installed mounting bars, or 1/2" EMT tubing (by others). Single locking features secures all adjustments. Alignment holes and markings allow fixture to be pre-set prior to installation. Final adjustment can be made from below inside fixture.
- Mounting Bars (C3LV):** Galvanized steel, 0.048"; pre-installed telescoping bars extend from 20" to 30" long and lock securely into position. Built-in locking tabs provide positive attachment to common T-bar systems. Self-centering feature simplified installation in 24" O.C. grid systems. Attaches to steel or wood joists without accessories.
- Transformer:** Replaceable from below. Magnetic: 120V/277V 60 Hz. dual-voltage, core & coil. Electronic: 120V or 277V 50/60 Hz., regulated lamp voltage, HPF, EMI and circuit protections, thermal auto-reset, quiet operation.

Features (continued)

- Frame-In Kit:** See Frame-In Kit specification sheets for more information. Non-IC and Non-IC AirSeal® - Insulation must be kept 3" away from any parts of the luminaire and must not be placed above luminaire in a manner which will entrap heat. IC AirSeal® - Luminaire may be in direct contact with thermal insulation.

Labels

U.L. (Suitable For Wet Locations), I.B.E.W.
 *Lamp wattage restriction for Non-IC: 65W for up to 1" thick ceiling, 50W for ceiling thickness greater than 1" (up to 2").

Options and Accessories

- 2" dia. Color Filters/Specialty filters:** See ADF2/AF2 specification sheets
- 2" Dia. Louver:** AL2HC
- Plaster Trim Ring (use with flangeless trim):** CA3FMR
- Chicago Plenum:** Consult Factory

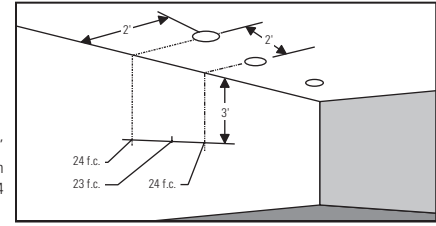
Job Information	Type:
Job Name:	
Cat. No.:	
Lamp(s):	
Notes:	

Lightolier a Genlyte company www.lightolier.com
 631 Airport Road, Fall River, MA 02720 • (508) 679-8131 • Fax (508) 674-4710
 We reserve the right to change details of design, materials and finish.
 © 2011 Genlyte Group LLC • F0711

LIGHTOLIER®

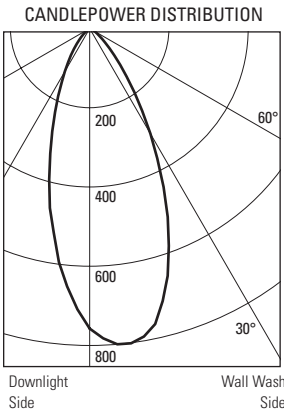


Calculite® Evolution Lensed Wall Washer C3MRL



Example: With multiple units located 2' from wall and 2' on center, the illumination on the wall 3'-down from the ceiling is 24 f.c. beneath and 23 f.c. between fixtures.

37W MR16 IR - 40° FLOOD SYLVANIA HALOGEN LAMP, LUMEN RATING = 840 LMS., 120V ELECTRONIC TRANSFORMER CL FINISH REFLECTOR, REPORT NO. 2774FR

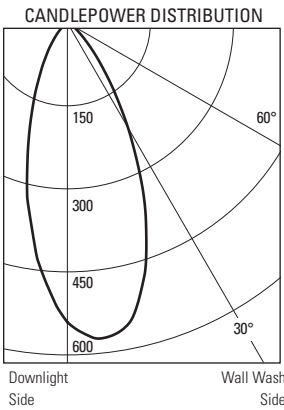


Distance From Ceiling in Feet	Multiple Units - Footcandles On Wall 2' from Wall - 2' On Center		
	2'	2'	2'
1	2.8	2.5	2.8
2	7.3	6.7	7.3
3	11.9	11.3	11.9
4	13.1	12.8	13.1
5	11.8	11.6	11.8
6	10.3	10.2	10.3
7	8.5	8.4	8.5
8	7.2	7.1	7.2
9	6.1	6.1	6.1
10	5.4	5.3	5.4
11	4.8	4.8	4.8
12	4.5	4.5	4.5
13	4.2	4.2	4.2
14	4.2	4.1	4.2

Distance From Ceiling in Feet	Multiple Units - Footcandles On Wall 2' from Wall - 3' On Center		
	3'	3'	3'
1	2.2	1.4	2.2
2	6.0	3.6	6.0
3	8.9	6.8	8.9
4	9.3	8.2	9.3
5	8.2	7.6	8.2
6	7.1	6.8	7.1
7	5.8	5.6	5.8
8	4.9	4.8	4.9
9	4.2	4.1	4.2
10	3.6	3.6	3.6
11	3.3	3.3	3.3
12	3.0	3.0	3.0
13	2.9	2.9	2.9
14	2.8	2.8	2.8

Distance From Ceiling in Feet	Multiple Units - Footcandles On Wall 3' from Wall - 3' On Center		
	3'	3'	3'
1	1.2	1.1	1.2
2	2.0	1.7	2.0
3	3.4	3.1	3.4
4	5.1	4.7	5.1
5	6.0	5.8	6.0
6	6.2	6.0	6.2
7	5.9	5.8	5.9
8	5.5	5.4	5.5
9	5.0	4.9	5.0
10	4.5	4.5	4.5
11	4.1	4.1	4.1
12	3.8	3.7	3.8
13	3.5	3.5	3.5
14	3.4	3.4	3.4

50W MR16 - 40° FLOOD GE HALOGEN LAMP, LUMEN RATING = 800 LMS., 120V ELECTRONIC TRANSFORMER CL FINISH REFLECTOR, REPORT NO. 2816FR

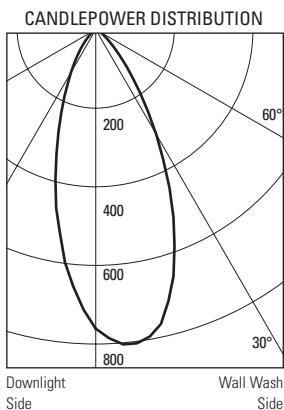


Distance From Ceiling in Feet	Multiple Units - Footcandles On Wall 2' from Wall - 2' On Center		
	2'	2'	2'
1	3.8	3.4	3.8
2	9.8	8.9	9.8
3	16.0	15.1	16.0
4	17.6	17.1	17.6
5	15.8	15.5	15.8
6	13.8	13.6	13.8
7	11.4	11.3	11.4
8	9.6	9.5	9.6
9	8.2	8.2	8.2
10	7.2	7.2	7.2
11	6.5	6.5	6.5
12	6.0	6.0	6.0
13	5.7	5.7	5.7
14	5.6	5.6	5.6

Distance From Ceiling in Feet	Multiple Units - Footcandles On Wall 2' from Wall - 3' On Center		
	3'	3'	3'
1	3.0	2.0	3.0
2	8.1	4.8	8.1
3	11.9	9.1	11.9
4	12.5	10.9	12.5
5	10.9	10.2	10.9
6	9.5	9.1	9.5
7	7.8	7.5	7.8
8	6.5	6.4	6.5
9	5.6	5.5	5.6
10	4.9	4.8	4.9
11	4.4	4.4	4.4
12	4.1	4.0	4.1
13	3.8	3.8	3.8
14	3.8	3.8	3.8

Distance From Ceiling in Feet	Multiple Units - Footcandles On Wall 3' from Wall - 3' On Center		
	3'	3'	3'
1	1.6	1.5	1.6
2	2.7	2.3	2.7
3	4.6	4.2	4.6
4	6.8	6.4	6.8
5	8.1	7.8	8.1
6	8.3	8.0	8.3
7	7.9	7.7	7.9
8	7.3	7.2	7.3
9	6.7	6.6	6.7
10	6.0	6.0	6.0
11	5.5	5.4	5.5
12	5.0	5.0	5.0
13	4.7	4.7	4.7
14	4.5	4.5	4.5

50W MR16 - 40° FLOOD SYLVANIA HALOGEN LAMP, LUMEN RATING = 1125 LMS., 120V ELECTRONIC TRANSFORMER CL FINISH REFLECTOR, REPORT NO. 2700FR



Distance From Ceiling in Feet	Multiple Units - Footcandles On Wall 2' from Wall - 2' On Center		
	2'	2'	2'
1	3.7	3.3	3.7
2	9.8	8.9	9.8
3	15.9	15.1	15.9
4	17.5	17.1	17.5
5	15.8	15.5	15.8
6	13.8	13.6	13.8
7	11.3	11.2	11.3
8	9.6	9.5	9.6
9	8.2	8.1	8.2
10	7.2	7.1	7.2
11	6.4	6.4	6.4
12	5.9	5.9	5.9
13	5.6	5.6	5.6
14	5.6	5.5	5.6

Distance From Ceiling in Feet	Multiple Units - Footcandles On Wall 2' from Wall - 3' On Center		
	3'	3'	3'
1	3.0	1.9	3.0
2	8.0	4.8	8.0
3	11.9	9.1	11.9
4	12.5	10.9	12.5
5	10.9	10.1	10.9
6	9.4	9.0	9.4
7	7.7	7.5	7.7
8	6.5	6.4	6.5
9	5.5	5.5	5.5
10	4.8	4.8	4.8
11	4.3	4.3	4.3
12	4.0	4.0	4.0
13	3.8	3.8	3.8
14	3.7	3.7	3.7

Distance From Ceiling in Feet	Multiple Units - Footcandles On Wall 3' from Wall - 3' On Center		
	3'	3'	3'
1	1.6	1.4	1.6
2	2.7	2.3	2.7
3	4.6	4.2	4.6
4	6.8	6.3	6.8
5	8.0	7.7	8.0
6	8.2	8.0	8.2
7	7.8	7.7	7.8
8	7.3	7.1	7.3
9	6.6	6.5	6.6
10	6.0	5.9	6.0
11	5.4	5.4	5.4
12	5.0	4.9	5.0
13	4.7	4.6	4.7
14	4.5	4.4	4.5

Job Information **Type:**

Lightolier a Genlyte company www.lightolier.com
 631 Airport Road, Fall River, MA 02720 • (508) 679-8131 • Fax (508) 674-4710
 We reserve the right to change details of design, materials and finish.
 © 2011 Genlyte Group LLC • F0711