

These two systems provide illumination when the H.I.D. lamp is out due to power interruption. The **Auxiliary Lighting System (A)** for recessed H.I.D. fixtures provides illumination during warm-up or cool-off-and-restart periods and remains on until the H.I.D. lamp reaches approximately 60 percent of its light output. The **Supplementary Lighting System (S)** for surface-mounted fixtures provides illumination when the H.I.D. lamp is out and shuts off when the H.I.D. lamp starts.

Auxiliary Lighting System (A) for Recessed H.I.D. Fixtures

General Description

Auxiliary lighting system for use during warm-up or cool-off-and-restart periods.

H.I.D. lamps, when first turned on, require a "warm-up" period of five to ten minutes to reach full output. Additionally, when these lamps are extinguished, even for an instant, they must cool for five to 15 minutes before they will relight. Outage can be caused by momentary power failure, substantial voltage reduction, or cycle changes.

To provide a minimum level of illumination, while waiting for the H.I.D. lamp to warm up or to cool to restrike temperature, an auxiliary light source is incorporated into the H.I.D. luminaire and is controlled by a voltage-sensing, switching device. The auxiliary light source will operate whenever (1) power is available and (2) the H.I.D. lamp is either off or warming up.

H.I.D. Lamp	Maximum Wattage Tungsten-Halogen Lamp T-4, 120V Mini-Can Base
32W-70W	100W
100 W	150 W (Except 6" and 7" dia. fixtures, 100W)
150 W	150W
175 W	150W
250W*	150W
400W*	250W

Electrical

Mini-can socket and solid-state switching device, for use with a 120V tungsten-halogen lamp, operate the tungsten-halogen lamp during initial H.I.D. lamp warm-up, or cool-off-and-restart period if the H.I.D. lamp goes out due to a temporary power outage. The tungsten-halogen lamp remains on until the H.I.D. lamp reaches approximately 60 percent light output. At this time the tungsten-halogen lamp is switched off and the H.I.D. lamp remains on.

The Auxiliary Lighting System is available for either 120V or 277V branch circuits with a ballast tap supplying 120V to the tungsten-halogen lamp.

To specify: add suffix "**A**" to Catalog Number for Recessed H.I.D. fixture. See fixture specification sheets for compatibility.

Option

Emergency Lighting System (**E**) for Recessed H.I.D. fixtures. Same as auxiliary lighting system, except without the switching devices. Provided with a tungsten-halogen lampholder assembly, prewired with #18 ga. SF-2 leads in a 5/16" x 26" long flexible greenfield cable.

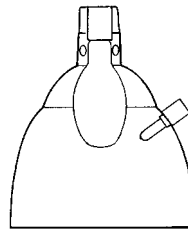
To specify add suffix "**E**" to catalog number for Recessed H.I.D. fixture. See fixture specification sheets for compatibility.

* For Round Lenslite LD 12 Series and 400w fixtures

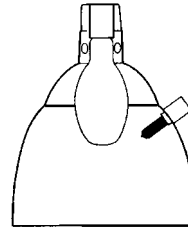
Not for residential use. Install with minimum spacings between

- a) Centers of adjacent fixtures: 3 feet;
- b) Top of fixture and an overhead building member: 3 inches; and
- c) Fixture center to side wall: 1 1/2 feet.

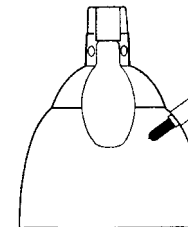
Mode of Operation



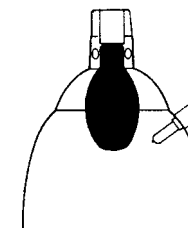
1. **Initial Start:** H.I.D. lamp and tungsten halogen lamp both energized. H.I.D. lamp starts warming up; tungsten-halogen lamp on.



2. **Partial Warm-Up:** H.I.D. lamp reaches approximately 60 percent light output; tungsten-halogen lamp switched off.



3. **Full Warm-Up:** H.I.D. lamp at 100 percent light output.



4. **"HOT" Restart:** H.I.D. lamp and tungsten halogen lamp both energized. H.I.D. lamp too hot to start; tungsten-halogen lamp on. After H.I.D. lamp cools down and starts, cycle begins as in "Initial Start" above.

Job Information	Type:
Job Name:	
Cat. No.:	
Lamp(s):	
Notes:	

Lightolier a Genlyte Thomas Company www.lightolier.com
 631 Airport Road, Fall River, MA 02720 • (508) 679-8131 • Fax (508) 674-4710
 We reserve the right to change details of design, materials and finish.
 © 2002 Genlyte Thomas Group LLC (Lightolier Division) • A0902

Supplementary Lighting System (S) for Surface Mounted H.I.D. Fixtures

General Description

Supplementary lighting system for use during hot restart periods. H.I.D. lamps, when first turned on, require a "warm-up" period of five to 10 minutes to reach full output. Additionally, when these lamps are extinguished even for an instant, they must cool for five to 15 minutes before they will relight. Outage can be caused by momentary power failure, substantial voltage reduction, or cycle changes. To provide a minimum level of illumination, while waiting for the H.I.D. lamp to cool to restrike temperature, a supplementary light source is incorporated into the H.I.D. luminaire and is controlled by a switching device. The supplementary light source will operate whenever (1) power is available and (2) the H.I.D. lamp is off.

Electrical

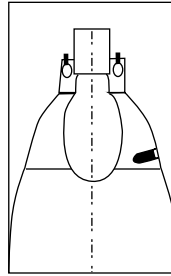
Mini-can socket and switching device, for use with a 120V tungsten halogen lamp, operate the tungsten-halogen lamp during cool-off-to-restart period if the H.I.D. lamp goes out due to a temporary power outage. The tungsten-halogen lamp remains on until the H.I.D. lamp starts. At this time the tungsten-halogen lamp is switched off and the H.I.D. lamp remains on.

The Supplementary system is available for either 120V or 277V branch circuits with a ballast tap supplying 120V to the tungsten-halogen lamp.

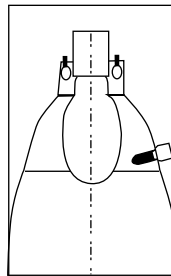
To specify: add suffix "S" to Catalog Number for Surface Mounted H.I.D. fixture. See fixture specification sheets for compatibility.

H.I.D. Lamp	Maximum Wattage Tungsten-Halogen Lamp T-4, 120V Mini-Can Base
32W-70W	100W
100W-250W	150W (Except 8" cylinder, 100W)

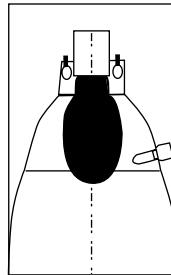
Mode of Operation



Initial Start: H.I.D. lamp energized and tungsten-halogen lamp off. H.I.D. lamp starts warming up.



Normal Operation: H.I.D. lamp at full output. Tungsten-halogen lamp off.



"Hot" Restart: H.I.D. lamp and tungsten halogen lamp both energized. H.I.D. lamp too hot to start; tungsten-halogen lamp on. After H.I.D. lamp cools down and starts, cycle begins as in "Initial Start" above.

Job Information **Type:**

Lightolier a Genlyte Thomas Company www.lightolier.com
 631 Airport Road, Fall River, MA 02720 • (508) 679-8131 • Fax (508) 674-4710
 We reserve the right to change details of design, materials and finish.
 © 2002 Genlyte Thomas Group LLC (Lightolier Division) • A0902

LIGHTOLIER®