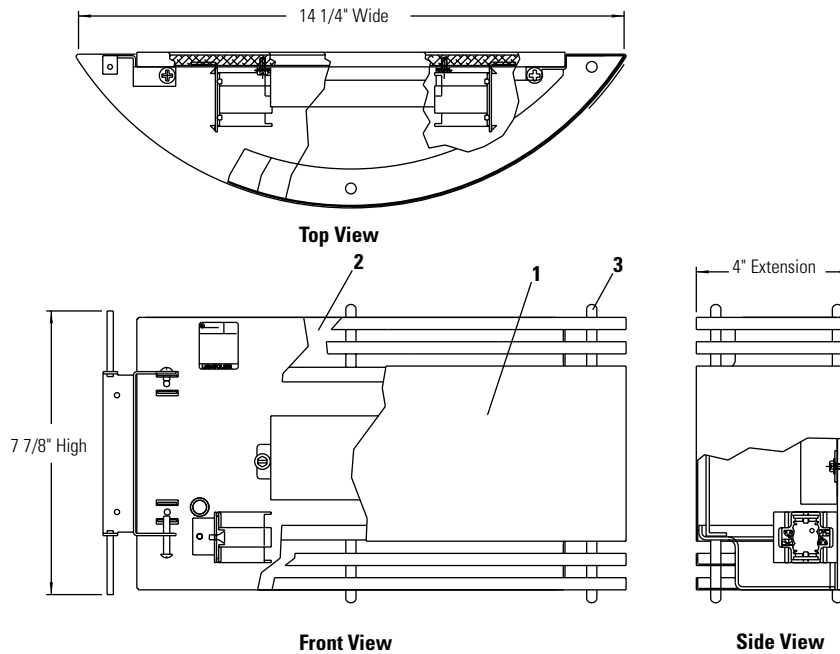




Decorative Visor 1[®] Direct/Indirect Light **40618U**



Cat. No.	Finish	Lamps	Width	Height	Extension	Ballast Type	Voltage
40618WHU	White	(2) 13W Quad Tube 4-Pin	14 1/4"	7 7/8"	4"	1-2 Lt. Electronic	120V/277V
40618SBU	Satin Brass	(2) 13W Quad Tube 4-Pin	14 1/4"	7 7/8"	4"	1-2 Lt. Electronic	120V/277V
40618SCU	Satin Chrome	(2) 13W Quad Tube 4-Pin	14 1/4"	7 7/8"	4"	1-2 Lt. Electronic	120V/277V

Features

- Diffuser Assembly:** Front arch and spill rings, die-formed 20 ga. steel, see chart for finishes. Removable by loosening two screws and unhooking from backplate. All painted surfaces baked enamel.
- Diffuser:** (2) injection molded white translucent acrylic.
- Holder Knobs:** Turned brass, see chart for finishes.

Fixture conforms to (ADA) Federal Regulations.

Lamping

Compact Fluorescent: 13W Quad Tube 4-Pin

General Electric	Osram/Sylvania	Philips
F13 DBX/SPX*/4P	CF13DD/E/*	PL-C13W/*/4P

* Manufacturers' color temperature designation.

Mounting

Directly to most outlet boxes with crossbar provided.

Electrical

Lampholders: Compact Fluorescent: 4-pin, G24q-1 base

Ballasts:	Electronic	120/277V
Total input Watts	30	
Max. line Current (Amps)	0.25 / 0.11	
Power Factor	>.97	
Ballast Factor	>.98	
THD	<10%	
Min. Starting Temp.	-18°C (0°F)	

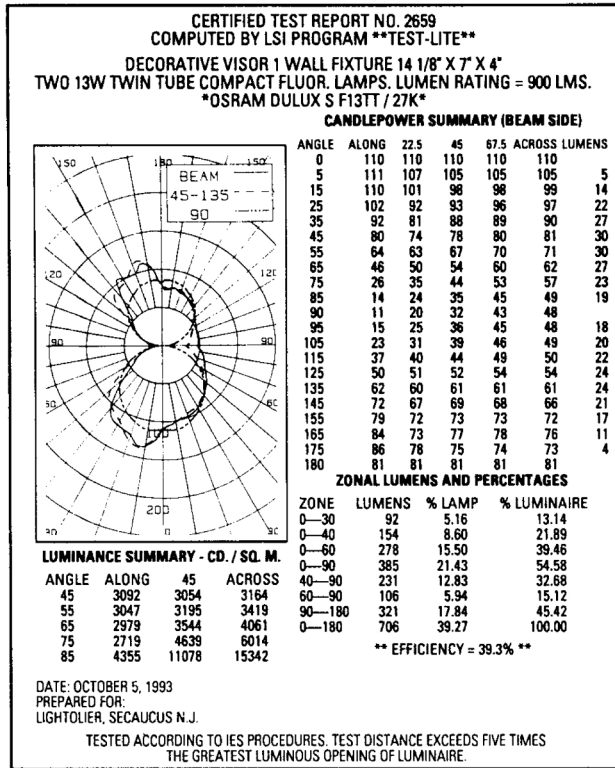
Labels

UL listed suitable for damp locations, I.B.E.W.

Job Information	Type:
Job Name:	
Cat. No.:	
Lamp(s):	
Notes:	

Lightolier a Genlyte Thomas Company www.lightolier.com
 631 Airport Road, Fall River, MA 02720 • (508) 679-8131 • Fax (508) 674-4710
 We reserve the right to change details of design, materials and finish.
 © 2002 Genlyte Thomas Group LLC (Lightolier Division) • A0902

LIGHTOLIER[®]



CORRIDOR LIGHTING
Footcandles on Floor

10'	0.5	0.4	0.4	0.4	0.4	0.4	0.4
9'	0.6	0.5	0.5	0.5	0.5	0.4	0.4
8'	0.7	0.7	0.6	0.6	0.6	0.5	0.5
7'	0.9	0.8	0.8	0.7	0.7	0.6	0.5
6'	1.1	1.0	1.0	0.9	0.8	0.7	0.6
5'	1.4	1.3	1.2	1.1	1.0	0.8	0.7
4'	1.7	1.6	1.5	1.3	1.1	1.0	0.8
3'	2.1	2.0	1.8	1.6	1.3	1.1	0.9
2'	2.6	2.3	2.1	1.8	1.5	1.2	1.0
1'	2.9	2.6	2.3	1.9	1.6	1.3	1.1
0'	3.0	2.7	2.4	2.0	1.6	1.3	1.1

← Luminaire

Footcandles values are initial.
 Luminaire mounted 6'6" above floor.
 Corridor is 8' wide by 8' high.
 Room Reflectances: 80% Ceiling, 50% Walls, 20% Floor.
 For multiple luminaires add together footcandles contributed by each luminaire at point(s) desired.

LIGHTOLIER[®]

Job Information **Type:**

Lightolier a Genlyte Thomas Company www.lightolier.com
 631 Airport Road, Fall River, MA 02720 • (508) 679-8131 • Fax (508) 674-4710
 We reserve the right to change details of design, materials and finish.
 © 2002 Genlyte Thomas Group LLC (Lightolier Division) • A0902