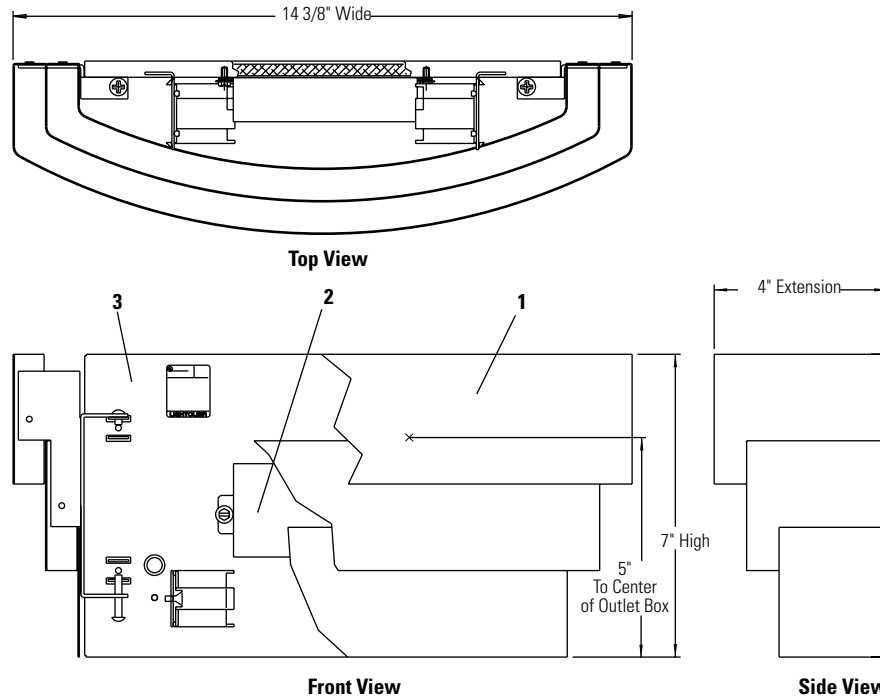


Decorative Trio® Direct/Indirect Light **40616U**



Cat. No.	Finish	Lamps	Width	Height	Extension	Ballast Type	Voltage
40616WHU	White	(2) 13W Quad Tube 4-Pin	14 3/8"	7"	4"	1-2LT Electronic	120V/277V
40616SBU	Satin Brass	(2) 13W Quad Tube 4-Pin	14 3/8"	7"	4"	1-2LT Electronic	120V/277V
40616SCU	Satin Chrome	(2) 13W Quad Tube 4-Pin	14 3/8"	7"	4"	1-2LT Electronic	120V/277V

Features

- Diffuser Assembly:** Die-formed 20 ga. steel. See chart for finishes. Removable by loosening two screws and unhooking from backplate. All painted surfaces, baked enamel.
- Ballast:** Electronic 120/277V. See chart for electrical specifications.
- Backplate:** Die-formed 20 ga. steel, matte finish.

Lamping

Compact Fluorescent: 13W Quad tube, 4-Pin G24q-1 base

General Electric	Osram/Sylvania	Philips
F13DBX/SPX*/4P	CF13DD/E/	PL-13W/*4P

* Manufacturers' color temperature designation.

Mounting:

Directly to most outlet boxes with crossbar provided.

Electrical

Lampholders: Compact Fluorescent: 4-pin, G24q-1 base

Ballasts:	Electronic 120/277V
Total input Watts	30
Max. line Current (Amps)	0.25 / 0.11
Power Factor	>.97
Ballast Factor	>.98
THD	<10%
Min. Starting Temp.	-18°C (0°F)

Labels

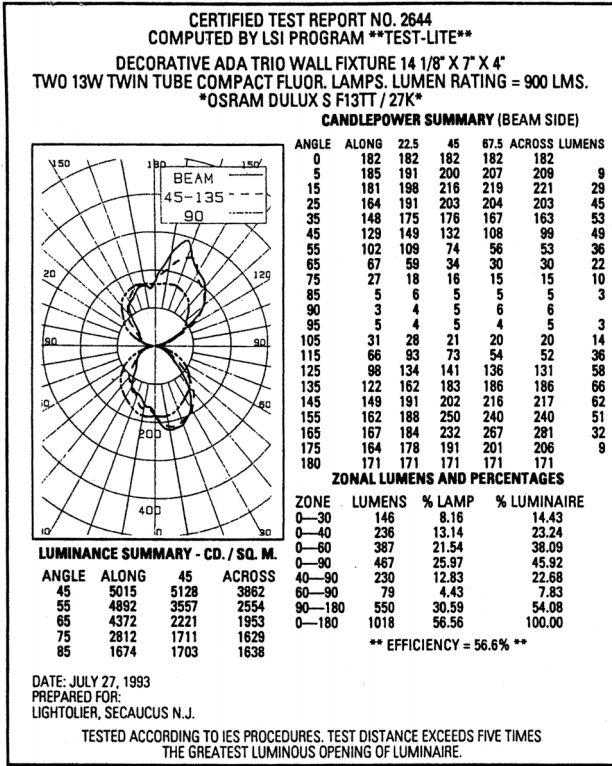
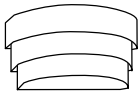
UL listed. Suitable for damp locations, I.B.E.W.

Fixture conforms to Americans with Disabilities Act (ADA) Federal Regulations Protruding Objects.

Job Information	Type:
Job Name:	
Cat. No.:	
Lamp(s):	
Notes:	

Lightolier a Genlyte Thomas Company www.lightolier.com
 631 Airport Road, Fall River, MA 02720 • (508) 679-8131 • Fax (508) 674-4710
 We reserve the right to change details of design, materials and finish.
 © 2002 Genlyte Thomas Group LLC (Lightolier Division) • A0902

LIGHTOLIER®



CORRIDOR LIGHTING
Footcandles on Floor

Distance	1'	2'	3'	4'	5'	6'	7'
10'	0.8	0.8	0.7	0.7	0.6	0.5	0.5
9'	1.0	1.0	0.9	0.8	0.7	0.6	0.5
8'	1.2	1.2	1.1	1.0	0.9	0.7	0.6
7'	1.6	1.6	1.5	1.3	1.1	0.9	0.7
6'	2.1	2.0	1.9	1.6	1.3	1.0	0.8
5'	2.7	2.6	2.4	2.0	1.6	1.2	1.0
4'	3.4	3.3	3.0	2.4	1.9	1.4	1.1
3'	4.3	4.2	3.6	2.9	2.2	1.6	1.2
2'	5.2	5.0	4.3	3.3	2.5	1.8	1.3
1'	5.9	5.7	4.8	3.7	2.7	1.9	1.4
0'	6.2	5.9	5.0	3.8	2.7	2.0	1.4

← Luminaire

Footcandles values are initial. Luminaire mounted 6'6" above floor.
 Corridor is 8" wide by 8" high.
 Room Reflectances: 80% Ceiling, 50% Walls, 20% Floor.
 For multiple luminaires add together footcandles contributed by each luminaire at point(s) desired.

Job Information **Type:**

Lightolier a Genlyte Thomas Company www.lightolier.com
 631 Airport Road, Fall River, MA 02720 • (508) 679-8131 • Fax (508) 674-4710
 We reserve the right to change details of design, materials and finish.
 © 2002 Genlyte Thomas Group LLC (Lightolier Division) • A0902

LIGHTOLIER®